

Background

Fluorescein-labeled (FLR) K48 TUBE HF binds K48-linked poly-ubiquitin with a 100-fold preference for K48 over other linkage types and provides a sensitive and cost-effective tool for determining the abundance of K48-linked polyubiquitin in the cell or identifying the linkage-type associated with a particular protein of interest.

FLR-K48 TUBE HF has one fluorescein molecule conjugated to a single, defined location within the protein.

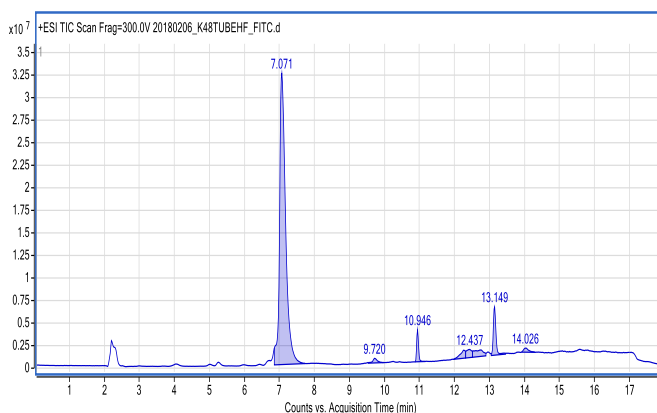
Application(s)

- Cytochemical and histochemical staining of polyubiquitinated proteins for fluorescence microscopy.
- Detection of K48-linked polyubiquitinated proteins by ligand (far Western) blotting

Product Specifications

Affinity Tag	None
Purity	≥ 95% by RP-HPLC
Quantity	50 µg
Expression System	<i>E. coli</i>
Molecular Weight	23,421 Da
Physical State	Liquid
Buffer	PBS
Concentration	Variable, depending on lot number
Stability & Storage	Over 1 year at -80°C. Avoid repeated freeze/thaw cycles
Excitation/Emission Wavelengths:	495 nm/520 nm

Product QC



RP-HPLC

References

1. Kadimisetty K., et al., Methods Mol Biol, 2021;2365:185-202.
2. Aillet, F., et al., Meth Mol Biol, 2012. 832: p. 173-183.
3. Hjerpe R., et al., EMBO Rep. 2009;10(11):1250-8.

All products are for research use only • Not intended for human or animal diagnostic or therapeutic uses
Copyright © 2025 LifeSensors, Inc. All Rights Reserved

Fluorescein-labeled K48 TUBE HF
Cat. # UM507F

All products are for research use only • Not intended for human or animal diagnostic or therapeutic uses
Copyright © 2025 LifeSensors, Inc. All Rights Reserved