

UBE2C (Ubc10)

Cat. # UB222

Background

UBE2C (also known as Ubc10) is an E2 ubiquitin-conjugating enzyme that works with E1 and E3 enzymes to ubiquitinate target substrates. It specifically donates ubiquitin to the anaphase-promoting complex/cyclosome (APC/C), which facilitates the degradation of mitotic substrates, including various cyclins, thereby promoting anaphase onset and cell cycle progression. UBE2C is a key regulator of chromosome stability and has been identified as a marker of chromosomal instability, with elevated expression linked to malignant growth and tumorigenesis.

Alternate Names

UBCH10, Ubiquitin-Protein Ligase C, Mitotic-Specific Ubiquitin-Conjugating Enzyme

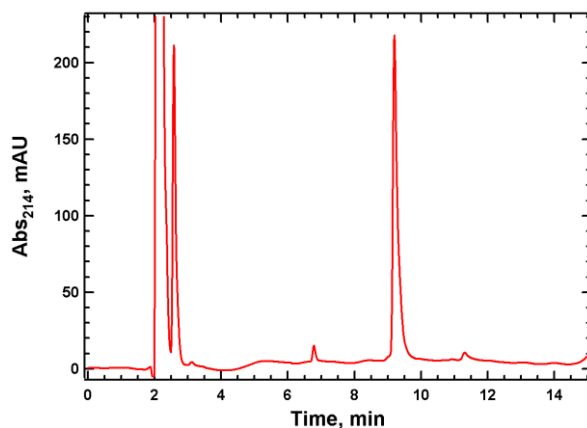
Application(s)

Ubiquitin ligation reactions

Product Information

Tag	None
Purity	≥ 95% by RP-HPLC
Molecular Weight	19,652.6 Da by MS (calculated 19,652.3)
Quantity	20 µl or 75 µl of a 40 µM solution (0.8 and 3 nmoles, respectively)
Species	Human, recombinant; Accession No. Q00762
Expression System	<i>E. Coli</i>
Physical State	Liquid
Buffer	25 mM Tris, pH 7.4; 150 mM NaCl; 10 mM DTT; 10% glycerol
Solubility	> 3 mg/ml
Stability & Storage	1 year at -80° C. Avoid repeated freeze/thaw cycles

Product QC



RP-HPLC

References

1. Huang S., et al., Discov Oncol. 2024;15(1):589.
2. Cai D., et al., J Cancer. 2024;15(6):1701-1717.
3. Bajaj S., et al., J Biol Chem. 2016;291(27):14231-14247.

All products are for research use only • Not intended for human or animal diagnostic or therapeutic uses
Copyright © 2025 LifeSensors, Inc. All Rights Reserved