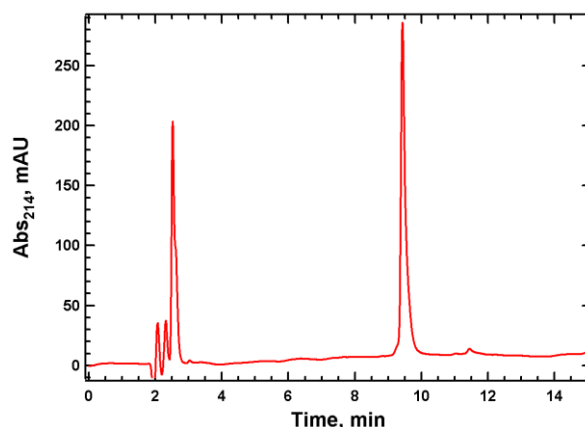


<b>Background</b>	UBE2F is a NEDD8-conjugating enzyme that mediates the transfer of NEDD8 from the NEDD8-activating enzyme E1 (UBA3–NAE1 complex) to a substrate protein. This E2 enzyme has been shown to associate with the NEDD8 E3 ligase RBX2 and exhibits different cullin target specificities compared to the related UBE2M/RBX1 E2/E3 complex.
<b>Alternate Names</b>	Ubiquitin-Conjugating Enzyme E2F, NEDD8-Conjugating Enzyme UBE2F, NCE2
<b>Application(s)</b>	NEDD8 ligation reactions

## Product Specifications

<b>Tag</b>	None
<b>Purity</b>	≥ 95% by RP-HPLC
<b>Molecular Weight</b>	21,077.4 Da by MS (expected 21,077)
<b>Quantity</b>	20 µl or 75 µl of a 40 µM solution (0.8 and 3 nmoles, respectively)
<b>Species</b>	Human, recombinant; Accession No. Q969M7
<b>Expression System</b>	<i>E. Coli</i>
<b>Physical State</b>	Liquid
<b>Buffer</b>	20 mM Tris, pH 7.4; 150 mM NaCl; 10 mM DTT; 10% glycerol
<b>Solubility</b>	> 3 mg/mL
<b>Stability &amp; Storage</b>	-80°C up to one year. Avoid repeated freeze/thaw cycles

## Product QC



**RP-HPLC**

## References

1. Zhou, L., et al., Cell Death Discov. 2023;9(1):23.