

UBE2R2 (Ubc3B)

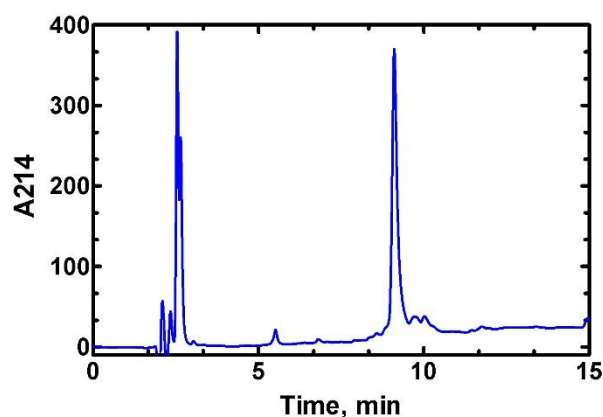
Cat. # UB209

Background	Ubiquitin-conjugating enzyme E2 R2 (UBE2R2) is a member of the ubiquitin-conjugating (E2) enzyme family. UBE2R2 receives ubiquitin from a ubiquitin-activating (E1) enzyme and subsequently interacts with a ubiquitin ligase (E3) to conjugate ubiquitin to substrate proteins. After phosphorylation of UBE2R2 by protein kinase CK2, it binds to the F-box protein β -TrCP, which is the substrate recognition subunit of an SCF E3 ligase. This enhances UBE2R2-mediated degradation of β -catenin.
Alternate Names	CDC34B; CDC34BEC 6.3.2.19; E2-CDC34B; FLJ20419; MGC10481; UBC3B; UBC3BUbiquitin-protein ligase R2, UBE2R2; Ubiquitin carrier protein R2; ubiquitin-conjugating enzyme E2 R2.
Application(s)	Ubiquitin ligation reactions

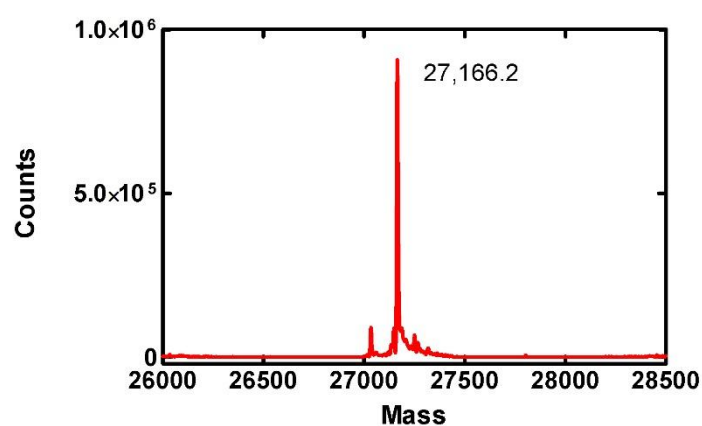
Product Specifications

Tag	None
Purity	$\geq 90\%$
Molecular Weight	27,166.1 Da
Quantity	20 μ L or 75 μ L of a 40 μ M solution (0.8 and 3 nmoles, respectively)
Species	Human, Accession No. Q712K3
Expression System	<i>E. Coli</i>
Physical State	Liquid
Buffer	TBS
Solubility	>3 mg/ml
Stability & Storage	1 year at -80° C. Avoid repeated freeze/thaw cycles

Product QC



RP-HPLC



Deconvoluted mass spectrum

References

1. Tu H., et al., J Med Virol. 2023;95(10):e28620.
2. Jin J., et al., Nature. 2007;447(7148):1135-8.
3. Semplici F., et al., Oncogene. 2002;21(25):3978-87.

All products are for research use only • Not intended for human or animal diagnostic or therapeutic uses
Copyright © 2025 LifeSensors, Inc. All Rights Reserved