

Background

PR-619 is a non-selective, reversible inhibitor of ubiquitin and ubiquitin-like isopeptidases with an IC₅₀ in the 5-20 μ M range. Additionally, PR-619 is cell permeable, and treatment of cells results in the accumulation of both ubiquitin and sumo-conjugated proteins.

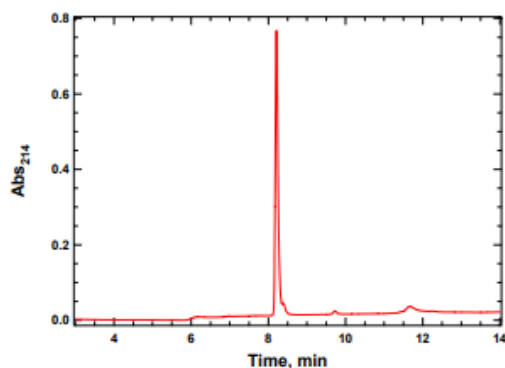
Application(s)

Non-specific inhibition of DUB for cell biology and drug discovery studies.

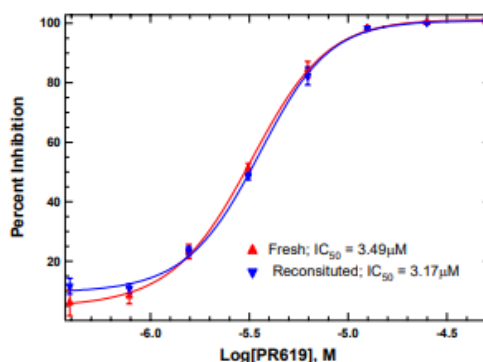
Product Specifications

Purity	$\geq 95\%$ by RP-HPLC
Molecular Weight	223.28 Da; measured M+H ⁺ = 224.11
Quantity	5 mg, 25 mg
Physical State	Dry powder
Solubility	> 5 mg/ml in DMSO
Stability & Storage	Ships at 4°C. Stable at 4°C for up to 1 year. For long-term storage, keep at -20°C.

Product QC



RP-HPLC



Typical DUB Inhibition Curves

References

1. Seiberlich V., et al., Biochim Biophys Acta. 2012;1823(11):2057-68.
2. García-Santisteban I., et al., Mol Cancer. 2013; 10; 12:91.