

## Background

Linear polyubiquitin, or met1-linked polyubiquitin, is a polyubiquitin chain linked through the C-terminus of one ubiquitin and the N-terminus of another. Linear polyubiquitin plays important roles in inflammatory and immune responses, particularly within the NFκB signaling pathway. LifeSensors' linear polyubiquitin antibody displays high specificity for linear polyubiquitin chains and is suitable for immunoblot detection of linear ubiquitin chains from tissue or cell lysates.

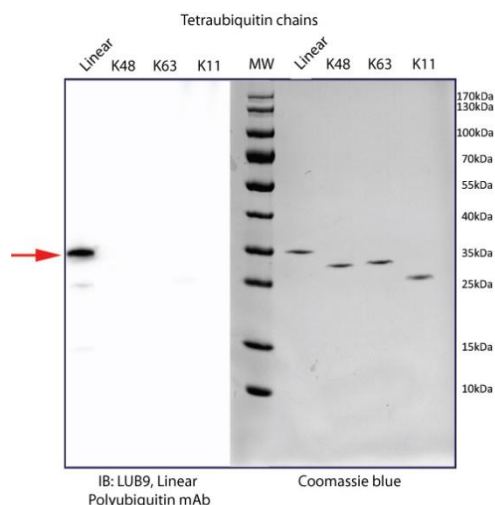
## Application(s)

Western blotting (1μg/ml; 1:1000 -1:2500). The antibody is not suitable for immunoprecipitation and has not yet been characterized for immunostaining procedures. For all applications, optimal conditions should be determined by the user.

## Product Specifications

<b>Purification</b>	Purified from cell culture supernatant using affinity chromatography
<b>Quantity</b>	100μg; Sufficient for >10 Western blot applications
<b>Physical State</b>	Supplied as variable Concentration in 10mM phosphate buffer, 0.15M NaCl, pH7.4
<b>Source &amp; Clonality</b>	Mouse monoclonal antibody to LUB9
<b>Species Reactivity</b>	Exhibits cross-species reactivity owing to the evolutionary conservation of ubiquitin across eukaryotic organisms.
<b>Immunogen</b>	Linear polyubiquitin
<b>Isotype</b>	IgG2b
<b>Stability &amp; Storage</b>	Over 1 year at -20° C. Avoid repeated freeze/thaw cycles. Aliquoting is not recommended

## Product QC



**LUB9 specifically detects linear over K11-, K48- and K63-linked polyubiquitin.** Synthetic tetraubiquitin chains of the indicated linkages (200 ng each) were separated by SDS-PAGE and coomassie stained (right) or transferred to nitrocellulose and immunoblotted with LUB9, Linear Ubiquitin mAb (1μg/ml) (left)

## References

1. Sasaki, Y., et al. (2013). EMBO J 32(18) : 2463-2476.