

## K11-Linked Tetra-Ubiquitin (Phosphorylated)

Cat. # SI1104P

### Background:

Ubiquitin Chains are essential components in the study of protein degradation pathways, protein trafficking, and cellular signaling processes. These polymeric chains of ubiquitin molecules play critical roles in regulating protein stability, localization, and activity. K11-linked ubiquitination is traditionally associated with cell cycle regulation and proteasomal degradation. Phospho-ubiquitin chains represent a specialized class of polyubiquitin characterized by phosphorylation at Serine 65 and play a central role in mitophagy signaling pathways.

K11 Tetra-Ubiquitin (phosphorylated) is a tetrameric chain of wild-type ubiquitin, wherein ubiquitin monomers are enzymatically linked together via an isopeptide bond between Lysine 11 and the C-terminal Glycine. The chains are then enzymatically phosphorylated at the Ser65 position.

### Application:

- Investigation of phosphoubiquitin chain specificity and selectivity
- Studies on the role of phosphoubiquitin chains in protein degradation pathways (e.g., proteasomal and autophagic degradation)
- Analysis of phosphoubiquitin-mediated signaling pathways and cellular responses
- Structural studies to elucidate the architecture and dynamics of phosphoubiquitin chains
- Screening assays to identify modulators of phosphoubiquitin chain assembly and disassembly processes

### Product Information

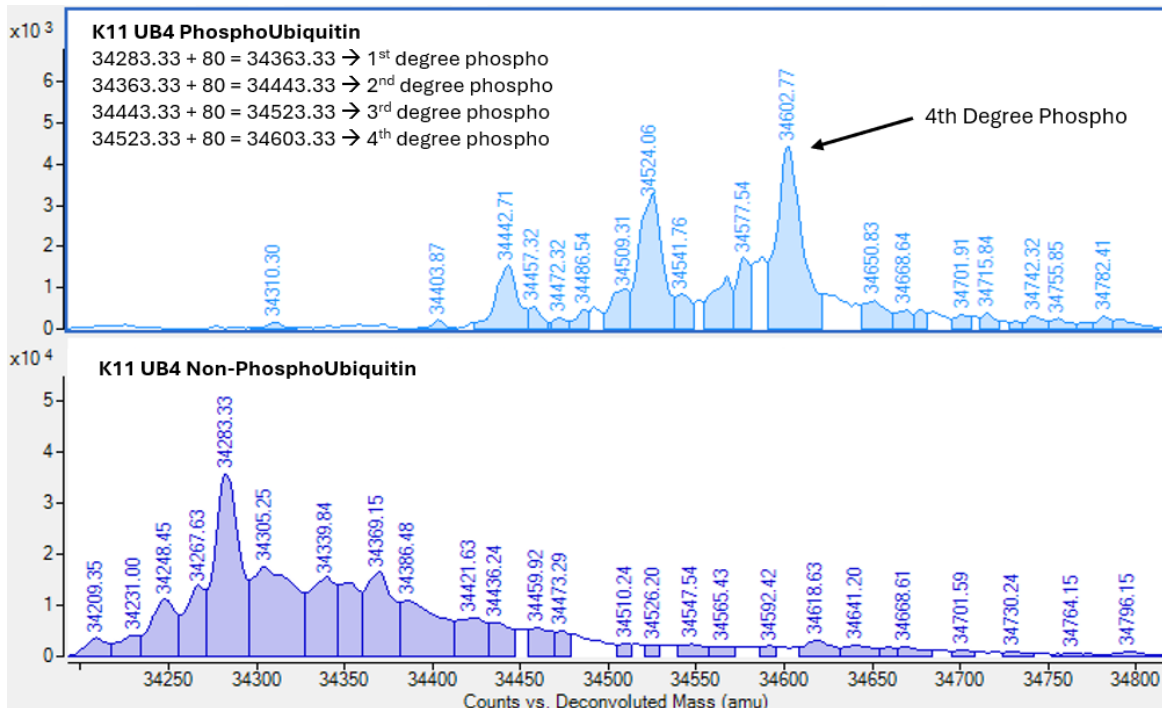
<b>Purity:</b>	≥ 95% by HPLC-MS
<b>Molecular Weight:</b>	34313-34937 Da
<b>Physical State:</b>	Liquid, 50 mM Tris, pH 7.5, 0.15 M NaCl
<b>Quantity:</b>	25 µg
<b>Solubility:</b>	>1 mg/mL
<b>Storage:</b>	-80° C. Avoid repeated freeze/thaw cycles

### References

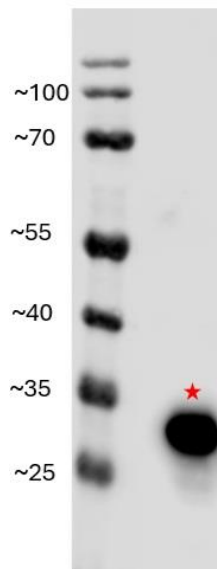
1. Wickliffe, K.E.; Williamson, A.; Meyer, H-J.; Kelly, A.; Rape, M. K11-linked Ubiquitin Chains as Novel Regulators of Cell Division. *Trends Cell Biol.* **2011**, *21*, 656-663.
2. Swatek, K.N. & Komander, D. Ubiquitin Modifications. *Cell Res.* **2016**, *26*, 399-422.
3. Yau, R. & Rape, M. The increasing complexity of the ubiquitin code. *Nat. Cell. Bio.* **2016**, *18*, 579-586.

All products are for research use only • not intended for human or animal diagnostic or therapeutic uses  
Copyright © 2009 LifeSensors, Inc. All Rights Reserved

Data



Deconvoluted Mass Spectrum



Western Blot Analysis (100 ng)

All products are for research use only • not intended for human or animal diagnostic or therapeutic uses  
 Copyright © 2009 LifeSensors, Inc. All Rights Reserved