

## SEN6core (SUMO1/sentrin specific peptidase 6)

Cat. # DB703

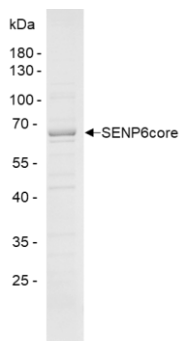
**Background** SENP6 (SUMO1/sentrin specific peptidase 6) is a SUMO isopeptidase. It reverses the covalent modification of proteins by SUMO moieties. SENP6core contains only the core domain of the SENP6 protein. Although it is active *in vitro* against hSUMO1, hSUMO2 and hSUMO3, SENP6 has a preference for SUMO2/3 conjugates over SUMO1 conjugates. SENP6 plays an important role in regulating the transcriptional activity of the RXRalpha.

**Alternate Names** FKSG6, FLJ11355, FLJ11887, KIAA0389, KIAA0797, Sentrin/SUMO-specific protease SENP6, Sentrin-specific protease 6, SSP1, SUMO-1-specific protease 1, SUSP1

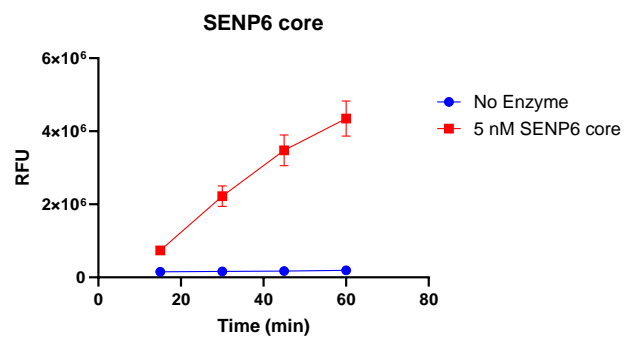
### Product Information:

<b>Purity</b>	≥ 85% by SDS-PAGE
<b>Molecular Weight</b>	55 kDa
<b>Quantity</b>	25 µg
<b>Physical State</b>	Liquid
<b>Source</b>	Human Recombinant
<b>Tag</b>	His6
<b>Activity</b>	This enzyme is active in the SUMO3-CHOP assay.
<b>Storage</b>	Store at -80°C, avoiding repeated freeze-thaw cycles.

### Product QC



**SDS-Page Analysis of purified SENP6core.** Two µg of the enzyme was loaded on a 10-20% SDS-PAGE gel and stained with Coomassie brilliant blue.



**Activity Assay of SENP6core.** 5 nM SENP6core was tested in a CHOP assay showing robust DUB activity.

### References

- 1) Barry, R., et al., Nat Commun., 2018. 9(1):3001.
- 2) Liczmanska, M., et al., Cell Rep., 2023. 42(8):112960.

All products are for research use only • Not intended for human or animal diagnostic or therapeutic uses  
Copyright © 2007 LifeSensors, Inc. All Rights Reserved

All products are for research use only • Not intended for human or animal diagnostic or therapeutic uses  
Copyright © 2007 LifeSensors, Inc. All Rights Reserved