

## SEN1core (SUMO1/sentrin/SMT3 specific peptidase 1)

Cat. # DB701

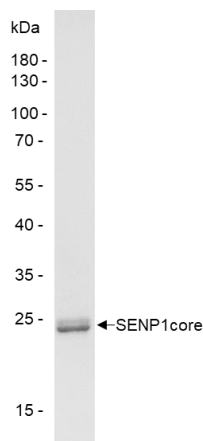
**Background** SENP1 (SUMO1/sentrin/SMT3 specific peptidase 1) is a SUMO isopeptidase. It reverses the covalent modification of proteins by SUMO moieties. SENP1core contains only the core domain of the SENP1 protein. It is active *in vitro* against hSUMO1, hSUMO2 and hSUMO3. SENP1 plays a critical role in the development of prostate cancer.

**Alternate names** Sentrin/SUMO-specific protease SENP1, Sentrin-specific protease 1

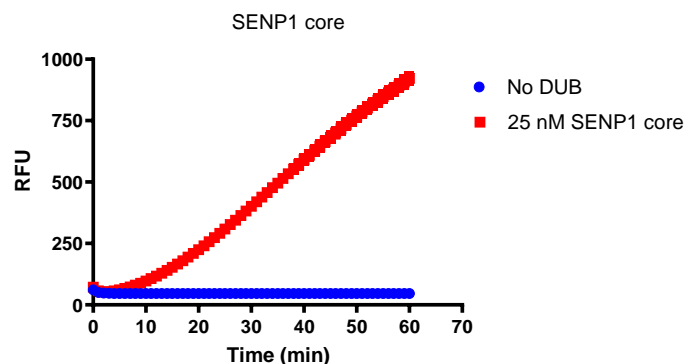
### Product Information

<b>Purity</b>	≥ 90% by SDS-PAGE
<b>Molecular Weight</b>	28 kDa
<b>Quantity</b>	25 µg
<b>Physical State</b>	Liquid
<b>Source</b>	Human Recombinant
<b>Tag</b>	His6
<b>Activity</b>	This enzyme is active in the SUMO3-CHOP assay.
<b>Storage</b>	-80° C. Avoid repeated freeze/thaw cycles

### Product QC



**SDS-Page Analysis of purified SENP1core.** Two µg of the enzyme was loaded on a 10-20% SDS-PAGE gel and stained with Coomassie brilliant blue.



**Activity Assay of SENP1core.** 25 nM SENP1core was tested in a CHOP assay showing robust DUB activity.

### References

- 1) Shangguan, X., et al., Nat Commun., 2021. 12(1):1812.
- 2) Wang, K., et al., FEBS J., 2023. 290(1):209-224.

All products are for research use only • Not intended for human or animal diagnostic or therapeutic uses  
Copyright © 2009 LifeSensors, Inc. All Rights Reserved