

## PLP2 (Papain like protease 2)

Cat. # DB603

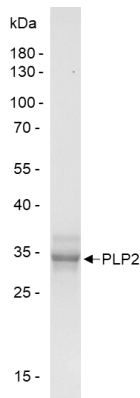
**Background** The common human respiratory pathogen NL63 is a human coronavirus (CoV) that is associated with both upper and lower respiratory tract disease such as bronchiolitis and croup. The NL63 genome encodes two papain like proteases, PLP1 and PLP2. PLP2 is a dual specificity isopeptidase with both deubiquitinase and deISGylase activity.

**Alternate names** A4, A4-LSB, Differentiation-dependent protein A4, Intestinal membrane A4 protein, MGC126187, Proteolipid protein 2

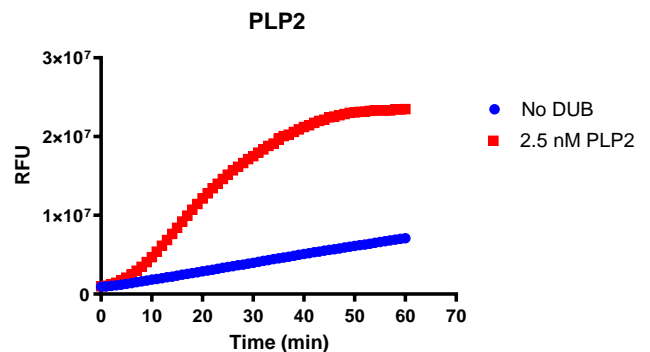
### Product Information

<b>Purity</b>	≥ 85% by SDS-PAGE
<b>Molecular Weight</b>	36.7 kDa
<b>Quantity</b>	25 µg
<b>Physical State</b>	Liquid
<b>Source</b>	NL63-CoV Recombinant
<b>Tag</b>	His6
<b>Activity</b>	This enzyme is active in the Ub-CHOP and ISG15-CHOP assay.
<b>Storage</b>	-80° C. Avoid repeated freeze/thaw cycles

### Product QC



**SDS-Page Analysis of purified PLP2.** Two µg of the enzyme was loaded on a 10-20% SDS-PAGE gel and stained with Coomassie brilliant blue.



**Activity Assay of PLP2.** 2.5 nM PLP2 was tested in a CHOP assay showing robust DUB activity.

### References

1. Maia, VSC., et al., Sci Rep., 2022. 12(1):2890.
2. Xiong, Y., et al., Sci Signal, 2023. 16(783):eade1985.

All products are for research use only • Not intended for human or animal diagnostic or therapeutic uses  
Copyright © 2009 LifeSensors, Inc. All Rights Reserved