

SseL (Salmonella secreted factor L)

Cat. # DB601

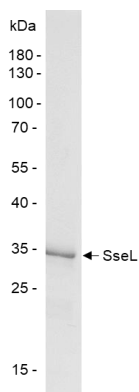
Background The novel virulence factor, SseL was identified in *Salmonella enterica* serovar Typhimurium. It is translocated from the bacteria into the infected cell by a type III secretion system. SseL showed a deubiquitinating activity *in vitro*. This deubiquitinating enzyme plays an important role in the pathogenesis of several other *Salmonella* serovars.

Alternate names STM2287

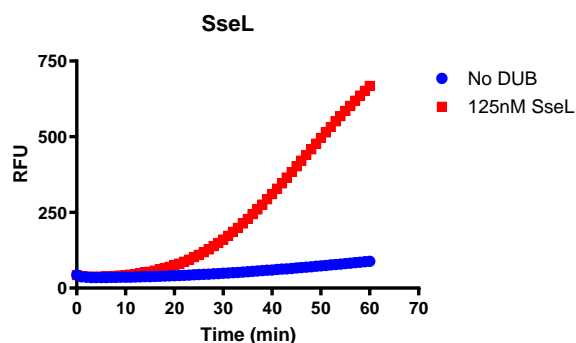
Product Information

| | |
|-------------------------|---|
| Purity | ≥ 95% by SDS_PAGE |
| Molecular Weight | 37 kDa |
| Quantity | 25 µg |
| Physical State | Liquid |
| Source | Salmonella Recombinant |
| Tag | His6 |
| Activity | This enzyme is active in the Ub-CHOP assay. |
| Storage | -80° C. Avoid repeated freeze/thaw cycles |

Product QC



SDS-Page Analysis of purified SseL. Two µg of the enzyme was loaded on a 10-20% SDS-PAGE gel and stained with Coomassie brilliant blue.



Activity Assay of SseL. 125 nM SseL was tested in a CHOP assay showing robust DUB activity.

References

1. Geng, S., et al., Microb Pathog., 2019. 129:1-6.
2. Walch, P., et al., Cell Host Microbe, 2021. 29(8):1316-1332.e12.

All products are for research use only • Not intended for human or animal diagnostic or therapeutic uses
Copyright © 2009 LifeSensors, Inc. All Rights Reserved