

## JosD2 (Josephin domain containing 2)

Cat. # DB404

### Background

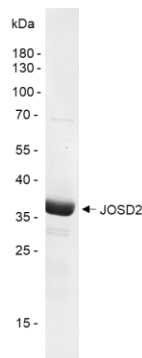
Josephin domain-containing 2, often abbreviated as JOSD2, is a human gene that encodes a protein with a Josephin domain, which is a type of cysteine protease that can remove ubiquitin from other proteins. JOSD2 has been found to be overexpressed in some cancers, such as hepatocellular carcinoma (HCC) and non-small cell lung cancer (NSCLC). OSD2 may also affect the infiltration and activation of immune cells in the tumor microenvironment, which can influence the outcome and treatment of cancer.

**Alternate names** FLJ29018, Josephin-2, SBBI54

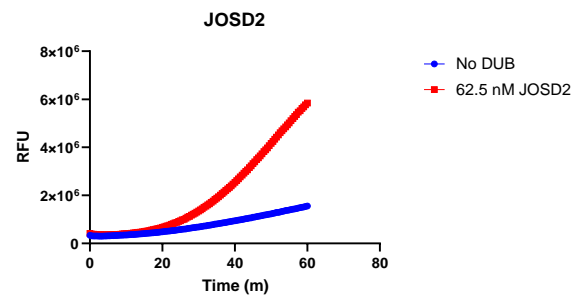
### Product Information

<b>Purity</b>	≥ 90% by SDS-PAGE
<b>Molecular Weight</b>	22 kDa
<b>Quantity</b>	25 µg
<b>Physical State</b>	Liquid
<b>Source</b>	Human Recombinant
<b>Tag</b>	His6
<b>Activity</b>	This enzyme is active in the Ub-CHOP assay.
<b>Storage</b>	-80° C. Avoid repeated freeze/thaw cycles

### Product QC



**SDS-Page Analysis of purified JOSD2.** Two µg of the enzyme was loaded on a 10-20% SDS-PAGE gel and stained with Coomassie brilliant blue.



**Activity Assay of JOSD2.** 62.5 nM JOSD2 was tested in a Ub-Rh110 assay showing robust DUB activity.

### References

1. Ge, F., et al., Journal of Zhejiang Univ., 1-11.
2. Huang, Y., et al., Cell Biol Int., 2022. 46(7):1089-1097.

All products are for research use only • Not intended for human or animal diagnostic or therapeutic uses  
Copyright © 2009 LifeSensors, Inc. All Rights Reserved