

## JosD1 (Josephin domain containing 1)

Cat. # DB403

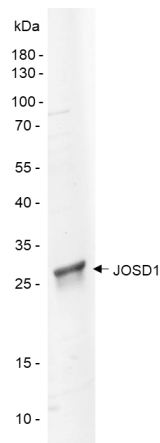
**Background** Josephin domain-containing 1, often abbreviated as JOSD1, is a human gene that encodes a protein with a Josephin domain, which is a type of cysteine protease that can remove ubiquitin from other proteins. JOSD1 has been implicated in various studies to promote cancer cell growth and regulate membrane dynamics, cell motility, and endocytosis.

**Alternate names** dJ508I15.2, Josephin-1, KIAA0063

### Product Information

<b>Purity</b>	≥ 90% by SDS-PAGE
<b>Molecular Weight</b>	23 kDa
<b>Quantity</b>	25 µg
<b>Physical State</b>	Liquid; 50µM in 50mM Tris pH 8, 150nM NaCl, 10% Glycerol
<b>Source</b>	Human Recombinant
<b>Tag</b>	His6
<b>Activity</b>	This enzyme is active in the Ub-CHOP assay.
<b>Storage:</b>	-80° C. Avoid repeated freeze/thaw cycles

### Product QC



**SDS-Page Analysis of purified JOSD1.** Two µg of the enzyme was loaded on a 10-20% SDS-PAGE gel and stained with Coomassie brilliant blue.

### References

1. Jing, C., et al., Cancer Cell Int., 2021. 21(1):375.
2. Ma, X., et al., Am J Cancer Res., 2022. 12(5):2323-2336.

All products are for research use only • Not intended for human or animal diagnostic or therapeutic uses  
Copyright © 2009 LifeSensors, Inc. All Rights Reserved