

Otulin (Gumby)

Cat. # DB206

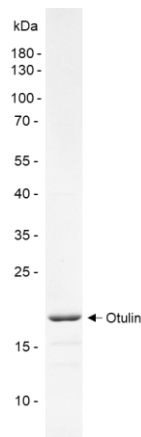
Background Otulin (Gumby) is a deubiquitinase exhibiting high specificity for linear ubiquitin chains (M1). Its specific interaction with the proximal ubiquitin leads to the activation of the catalytic triad. Otulin binds to HOIP (RNF31), a component of the linear chain synthesizing E3 ligase complex called LUBAC and regulates its activity thus affecting NFκB-regulated pathways and proinflammatory responses.

Alternate Names LUBAC DUB (Linear Ubiquitin Chain Assembly Complex Deubiquitinase), Met1-Ub DUB (Methionine-1-linked Ubiquitin Deubiquitinase), DUBA5 (Deubiquitinating Enzyme A5), FAM105B (its official gene symbol)

Product Information

Purity	> 90% by SDS-PAGE
Molecular Weight	40.6 kDa
Quantity	25 µg
Physical State:	Liquid, PBS with 5% glycerol
Tag	None
Storage:	-80° C. Avoid repeated freeze/thaw cycles

Product QC



SDS-Page Analysis of purified Otulin. Two µg of the enzyme was loaded on a 10-20% SDS-PAGE gel and stained with Coomassie brilliant blue.

References

1. Chu, Y., et al., Autophagy, 2021. 17(7):1684-1699.
2. Verboom, L., et al., Trends Immunol., 2021. 42(7):590-603.

All products are for research use only • not intended for human or animal diagnostic or therapeutic uses
Copyright © 2016 LifeSensors, Inc. All Rights Reserved