

Praja1 (E3 ubiquitin protein ligase Praja1)

Cat. # UB303

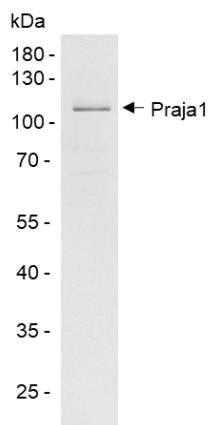
Background

Praja1 (along with Praja2, 53% identity) is a RING-H2 domain E3 (ubiquitin protein ligase) that is involved in the conjugation of ubiquitin to target substrates along with E1 and E2 enzymes. Substrates for Praja1 include Dlx1-1 (MAGE-D1, human) which regulates Dlx5 dependent transcriptional function (involved in osteoblast differentiation) and ELF and Smad3 involved in the TGF- β signaling pathway implicated in gastrointestinal cancers.

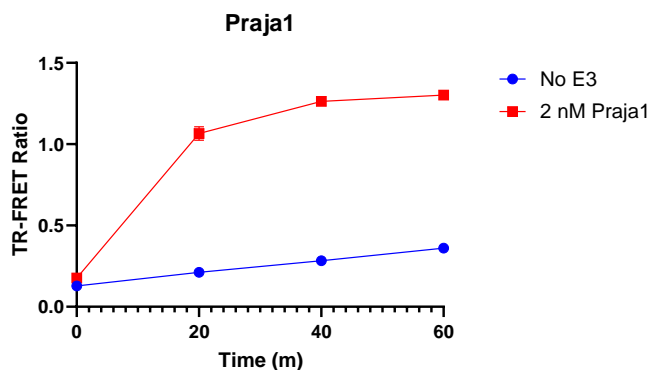
Product Information

Purity	$\geq 90\%$ by SDS-PAGE
Molecular Weight	71 kDa
Quantity	25 μ g
Physical State	Liquid
Species	Human Recombinant
Source	<i>E. coli</i>
Tag	His6SUMO
Activity	Typical enzyme concentration of 100 nM - 5 mM is used for in vitro conjugation, depending on conditions.
Storage	-80° C. Avoid repeated freeze/thaw cycles

Product QC



SDS-Page Analysis of purified Praja1. Two μ g of the protein was loaded on a 10-20% SDS-PAGE gel and stained with Coomassie brilliant blue.



Activity Assay of Praja1. 2 nM Praja1 was tested in a TR-FRET assay showing robust E3 ligase activity.

References

1. Consalvi, S., et al., Nat Commun., 2017. 8:13956.
2. Watabe, K., et al., Neuropathology, 2022. 42(6):488-504.

All products are for research use only • Not intended for human or animal diagnostic or therapeutic use.
Copyright © 2009 LifeSensors, Inc. All Rights Reserved