

VHL/ELOB/ELOC Complex

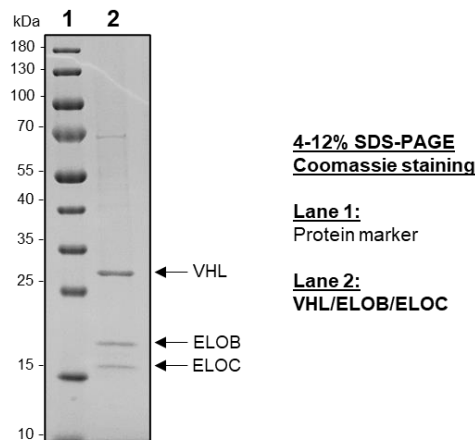
Cat. #UB332

Description: The VHL complex is a multi-subunit ubiquitin ligase constituted with VHL, Elongin B, Elongin C, Culin-2, and Rbx1. Elongin B (ELOB) and Elongin C (ELOC) are heterodimers that bind to the BC-box motif present in SOCS- & VHL-box protein families¹. VHL is the substrate recognition component that brings target specificity. In this specific E3 ligase complex, the ELOB/ELOC works as an adapter between target proteins and Cullin-2/Rbx1 in VHL-box E3 ubiquitin ligases².

- Application:**
- Protein degradation
 - PROTAC design
 - Selectivity Profiling

Product Information

| | |
|--------------------------|---|
| Purity | ≥ 90% by SDS-PAGE |
| Molecular Weight | VHL, 25 kDa; ELOB, 14 kDa; ELOC, 13 kDa |
| Genbank Accession | VHL, NM_000551; ELOB, NM_007108; ELOC, NM_005648 |
| Physical State | Liquid |
| Quantity | 10 µg, 50 µg |
| Buffer | 40 mM Tris-HCL, pH 8.0, 110 mM NaCl, 2.2 mM KCl, 20% glycerol, 2 mM DTT |
| Storage | -80°C. Avoid repeated freeze/thaw cycles |



References

1. Stebbins, C.E., *et al.*, *Science*. 1999; **284(5413)**: 455-461.71-4779.
2. Kamura, T., *et al.*, *Science*. 1999; **284(5414)**: 657-661.

All products are for research use only • not intended for human or animal diagnostic or therapeutic uses
Copyright © 2009 LifeSensors, Inc. All Rights Reserved