

VHL/CUL2/ELOB/ELOC/RBX1 Complex

Cat. # UB331

Description: VHL/CUL2/ELOB/ELOC/RBX1 complex of human VHL (GenBank Accession No. NM_000551) a.a. 2-212(end) with N-terminal FLAG-tag and MW= 25 kDa, human CUL2 (GenBank Accession No. NM_003591), a.a. 2-745(end) with N-terminal FLAG-tag and MW= 88 kDa, human ELOB (GenBank Accession No. NM_007108), a.a. 2-118 with N-terminal FLAG-tag and MW= 14 kDa, ELOC (GenBank Accession No. NM_005648), a.a. 2-112(end) with N-terminal His-tag and MW= 13 kDa human Rbx1 (GenBank Accession No. NM_014248), a.a. 2-108(end) with N-terminal His-tag and MW= 13 kDa, individually expressed in a HEK293 expression system

Application:

- Protein degradation
- PROTAC design
- Selectivity Profiling

Product Information

Purity: ≥ 95% by SDS-PAGE

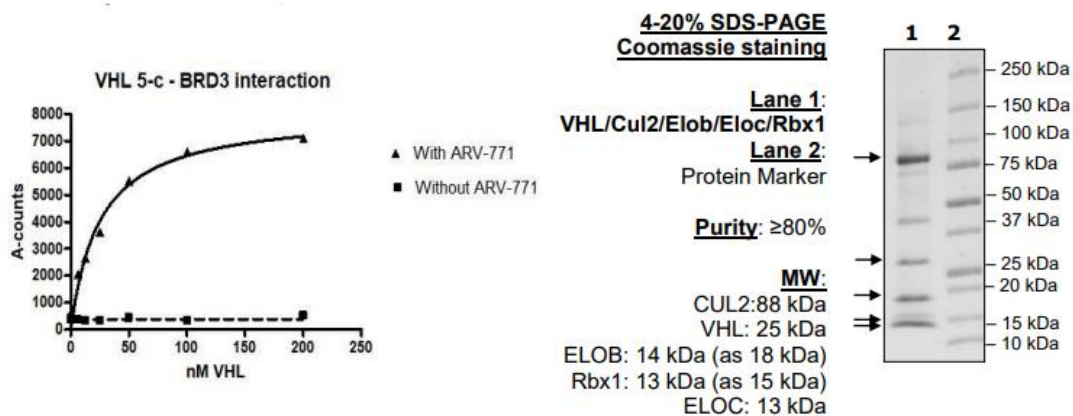
Molecular Weight: VHL: 25 kDa, CUL2: 88 kDa, ELOB: 14 kDa, ELOC: 13 kDa, Rbx1: 13 kDa

Physical State: Liquid

Quantity: 10 µg, 50 µg

Buffer: 40 mM Tris-HCL, pH 8.0, 110 mM NaCl, 2.2 mM KCl, 20% glycerol, 3 mM DTT

Storage: -80° C. Avoid repeated freeze/thaw cycles



References

1. Kamura, T., *et al.*, *Science*. 1999; **284(5414)**: 657-661.
2. Stebbins, C.E., *et al.*, *Science*. 1999; **284(5413)**: 455-461.71-4779.

All products are for research use only • not intended for human or animal diagnostic or therapeutic uses
 Copyright © 2009 LifeSensors, Inc. All Rights Reserved