

SARS-CoV-2 Spike Protein S1

Cat. # CV2005

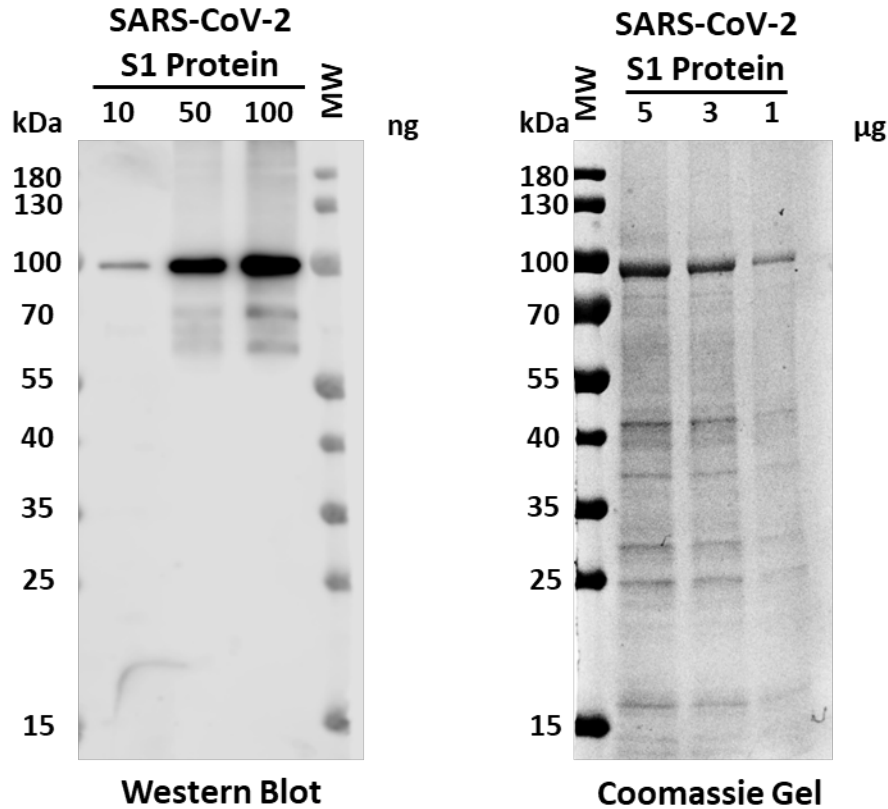
Background: Within the last two decades, SARS and MERS coronaviruses emerged as global health concerns causing severe acute respiratory syndromes. In December 2019, a novel coronavirus (SARS-CoV-2) was identified in Wuhan, Hubei province in China (1-3). The SARS-CoV-2 genome encodes several structural proteins including the Spike glycoprotein (S glycoprotein), which plays a crucial role in the infection of the host. The N-terminal part of the Spike protein (S1, residues 1-685) initiates the infection process by attaching the virus to host receptors (ACE2, CLEC4M/DC-SIGNR) located on the cell membrane (5-6). This interaction, which leads to the internalization of the virus into endosomes, is mediated by the receptor binding domain (residues 319-545). The Spike S1 Protein represents a valuable tool for drug discovery programs targeting SARS-CoV-2 infection.

Alternate names: S glycoprotein

Product Information

Molecular Weight:	74.9 kDa (residues 17-685)
Quantity:	100 µg
Physical State:	Liquid
Species:	SARS-CoV-2
Tag:	His ₆ -SUMO
Activity:	
Storage:	-80° C. Avoid repeated freeze/thaw cycles.

All products are for research use only • Not intended for human or animal diagnostic or therapeutic uses
Copyright © 2009 LifeSensors, Inc. All Rights Reserved



References

- 1) Wang D, Hu B, Hu C, et al. Clinical Characteristics of 138 Hospitalized Patients With 2019 Novel Coronavirus–Infected Pneumonia in Wuhan, China. *JAMA*. 2020;323(11):1061.
- 2) Zhou P, Yang X-L, Wang X-G, et al. A pneumonia outbreak associated with a new coronavirus of probable bat origin. *Nature*. 2020;579(7798):270–273.
- 3) Zhu N, Zhang D, Wang W, et al. A Novel Coronavirus from Patients with Pneumonia in China, 2019. *N. Engl. J. Med.* 2020;382(8):727–733.
- 4) Coutard B, Valle C, de Lamballerie X, et al. The spike glycoprotein of the new coronavirus 2019-nCoV contains a furin-like cleavage site absent in CoV of the same clade. *Antiviral Res.* 2020;176:104742.
- 5) Chan VSF, Chan KYK, Chen Y, et al. Homozygous L-SIGN (CLEC4M) plays a protective role in SARS coronavirus infection. *Nat. Genet.* 2006;38(1):38–46.
- 6) Yan R, Zhang Y, Li Y, et al. Structural basis for the recognition of SARS-CoV-2 by full-length human ACE2. *Science* (80-.). 2020;367(6485):1444–1448.

All products are for research use only • Not intended for human or animal diagnostic or therapeutic uses
 Copyright © 2009 LifeSensors, Inc. All Rights Reserved