

UBE2F

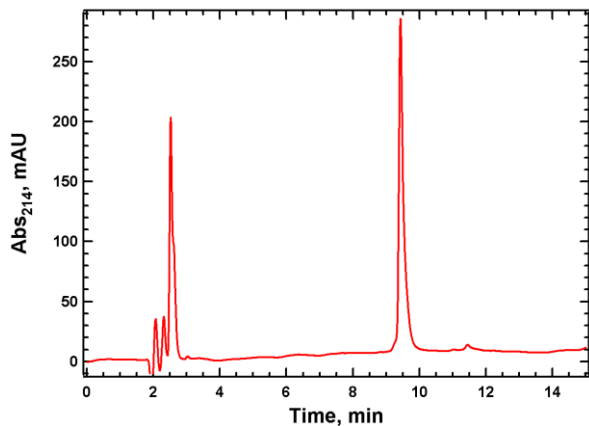
Cat. # UB216

Background: This E2 is a NEDD8-conjugating enzyme. UBE2F can mediate the transfer of NEDD8 from NEDD8-activating enzyme E1 (UBA3-NAE1 complex) to a substrate protein. This E2 enzyme has been shown to associate with the NEDD8 E3 ligase, RBX2 and displays different target cullin specificities than a similar UBE2M/RBX1 E2/E3 complex.

Application: NEDD8 ligation reactions

Product Information

Organism	Human, recombinant; Accession No. Q969M7
Purity:	≥ 95% by RP-HPLC
Molecular Weight:	21,077.4 Da by MS (expected 21,077)
Tag	none
Physical State:	Liquid, 20 mM Tris, pH 7.4; 150 mM NaCl; 10 mM DTT; 10% glycerol
Quantity:	20 or 75 µL of a 40 µM solution (0.8 and 3 nmoles, respectively)
Solubility:	>3 mg/mL
Storage:	-80° C. Avoid repeated freeze/thaw cycles



RP-HPLC

All products are for research use only • not intended for human or animal diagnostic or therapeutic uses
Copyright © 2009 LifeSensors, Inc. All Rights Reserved