

## His6-hWWP2

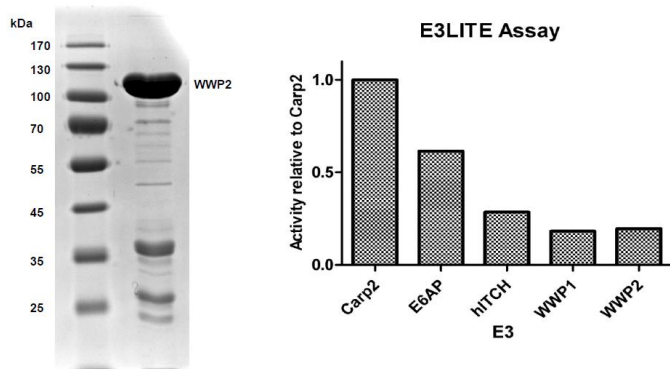
Cat. # UB316H

### Background:

WWP2 belongs to the NEDD4-like protein family. It has a variety of targets including PTEN.(1, 2)

### Product Information

<b>Purity:</b>	≥ 90% by SDS-PAGE
<b>Molecular Weight:</b>	112 kDa
<b>Quantity:</b>	25 µg
<b>Physical State:</b>	Liquid
<b>Source:</b>	Human Recombinant
<b>Tag:</b>	His <sub>6</sub>
<b>Storage:</b>	-80° C. Avoid repeated freeze/thaw cycles



### References

1. The HECT E3 Ubiquitin Ligase WWP2 Is Autoinhibited by a Peptide Linker. *Cancer Discov.* 2017;7(7):OF19. doi: 10.1158/2159-8290.CD-RW2017-091. PubMed PMID: 28500026.
2. Zhu W, He X, Hua Y, Li Q, Wang J, Gan X. The E3 ubiquitin ligase WWP2 facilitates RUNX2 protein transactivation in a mono-ubiquitination manner during osteogenic differentiation. *J Biol Chem.* 2017;292(27):11178-88. doi: 10.1074/jbc.M116.772277. PubMed PMID: 28500134; PMCID: PMC5500787.

All products are for research use only • Not intended for human or animal diagnostic or therapeutic uses  
Copyright © 2009 LifeSensors, Inc. All Rights Reserved