

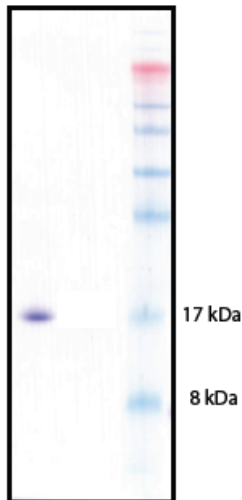
K29-linked di-ubiquitin (Ub2)

Cat. # SI2902

Background: K29-linked di-ubiquitin (Ub2) is a diubiquitin linked by a native isopeptide bond between the C-terminal glycine of the distal ubiquitin and the epsilon amino group of lysine 29 on the proximal ubiquitin. The product is generated using chemical ligation. It is a useful substrate for identifying and characterizing deubiquitinating enzymes that cleave the K29-linkage and for structural and binding studies of ubiquitin chain recognition by ubiquitin-associated domains (UBA) or ubiquitin-interacting motifs (UIMs).

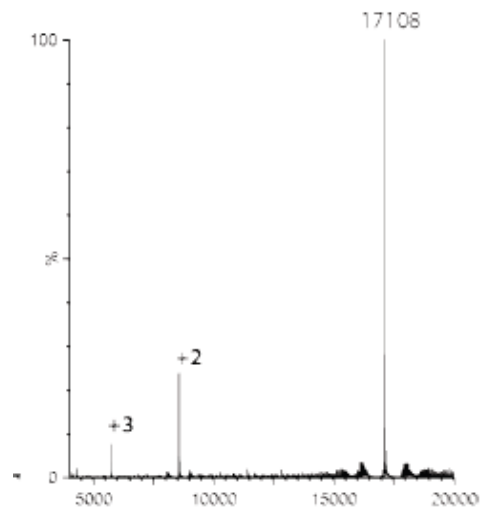
Product Information

Purity:	≥ 95% by HPLC
Molecular Weight:	17107Da by MS (calculated 17112Da)
Physical State:	Liquid, 0.5 mg/mL; 20mM Tris-HCl, pH 7.5, 0.15M NaCl, 1mM EDTA
Quantity:	25μg
Storage:	-80°C. Avoid repeated freeze/thaw cycles



**K29
diUb**

SDS-PAGE Analysis



Mass spectrum

All products are for research use only • not intended for human or animal diagnostic or therapeutic uses
Copyright © 2013 LifeSensors, Inc. All Rights Reserved