

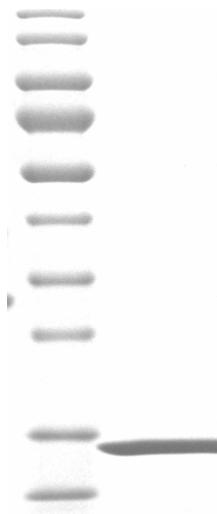
K6-linked di-ubiquitin (Ub2)

Cat. # SI0602

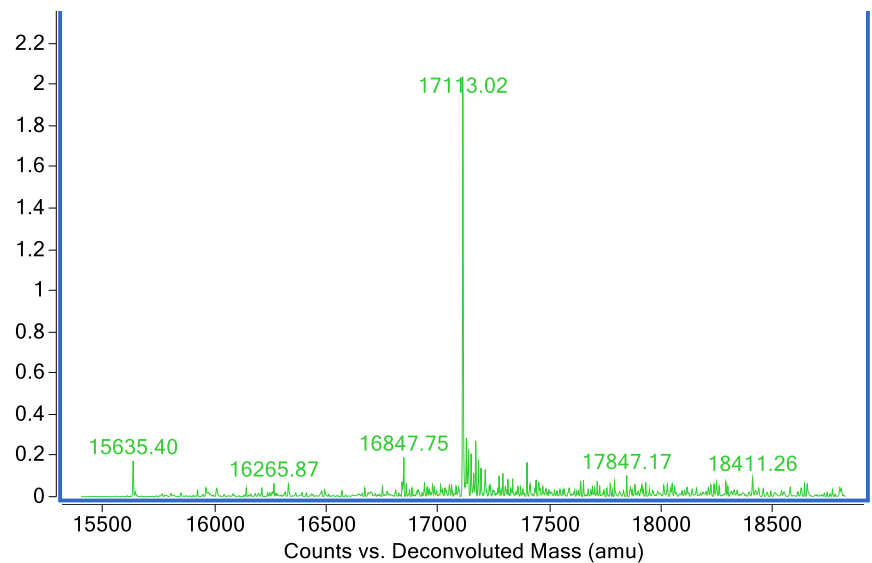
Background: K6-linked di-ubiquitin (Ub2) is a diubiquitin linked by a native isopeptide bond between the C-terminal glycine of the distal ubiquitin and the epsilon amino group of lysine 6 on the proximal ubiquitin. It is a useful substrate for identifying and characterizing deubiquitinating enzymes that cleave the K6-linkage and for structural and binding studies of ubiquitin chain recognition by ubiquitin-associated domains (UBA) or ubiquitin-interacting motifs (UIMs).

Product Information

Purity:	≥ 95% by SDS-PAGE
Molecular Weight:	17113 Da by MS (calculated 17112Da)
Physical State:	Liquid, 0.5 mg/mL; PBS pH 7.4
Quantity:	25µg
Storage:	-80°C. Avoid repeated freeze/thaw cycles



SDS-PAGE Analysis



Mass spectrum

All products are for research use only • not intended for human or animal diagnostic or therapeutic uses
Copyright © 2013 LifeSensors, Inc. All Rights Reserved