

## Linear di-ubiquitin (Ub2)

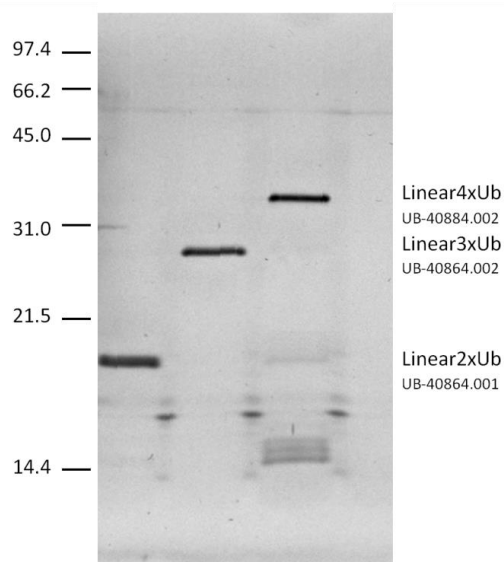
Cat. # SI0102

**Background:** Increasing evidence suggests that polyUb chains joined through linear peptide bonds between the C-terminus of a ubiquitin and the N-terminus of another play important functional roles. The enzyme machinery responsible for the generation of linear polyUb chains has been termed LUBAC, consisting of HOIL-1L and HOIP. Chains of this linkage-type have been determined to have an open conformation, similar to polyUb K63, but with very distinct functional properties. Linear polyUb chains are cleaved by the deubiquitylases CYLD, USP5 (IsoT), USP2 and have been shown to bind to many UBDs including NEMO and Trabin-n (3xnf).

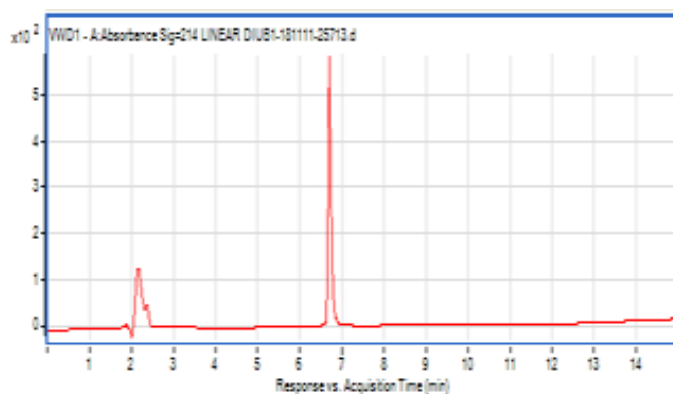
This product consists of recombinant linear chains of defined length expressed in *E. coli* and purified to homogeneity. Amide linkages join the N- and C-terminus of each ubiquitin molecule to each other. This molecule is HIS<sub>6</sub>-tagged at the N-terminus of the most distal ubiquitin.

### Product Information

<b>Purity:</b>	≥ 90% by RP-HPLC
<b>Molecular Weight:</b>	17,787.0 Da
<b>Physical State:</b>	Liquid, 20mM Tris, pH 7.5, 0.15M NaCl, 1mM EDTA
<b>Quantity:</b>	100 µg
<b>Storage:</b>	-80°C. Avoid repeated freeze/thaw cycles



Approximately 50ng of polyUb chains were subjected to SDS-PAGE analysis (15%) and visualized by silver staining.



**RP-HPLC Profile**

All products are for research use only • not intended for human or animal diagnostic or therapeutic uses  
Copyright © 2009 LifeSensors, Inc. All Rights Reserved