

SENP6core Antibody (SUMO1/sentrin specific peptidase 6)

Cat. # AB703

Background

SENP6 is a SUMO/sentrin specific protease that functions to remove SUMO from conjugated proteins. SENP6 has been shown to deSUMOylate a member of the ligand-activated transcription factors called retinoid X receptor alpha. The transcriptional activity of RXRalpha is regulated by SUMOylation Researchers have demonstrated that SENP6 has a preference for SUMO2/3 conjugates over SUMO1 conjugates².

Alternate Names: FKSG6, FLJ11355, FLJ11887, KIAA0389, KIAA0797, Sentrin/SUMO-specific protease SENP6, Sentrin-specific protease 6, SSP1, SUMO-1-specific protease 1, SUSP1

Molecular Weight: 55kDa

Specificity/Applications

Species Cross Reactivity: Human

Source: Chicken

Applications: WB

Recommended Antibody Dilutions:

Western Blotting: Robust detection of 100ng of recombinant protein was possible when antibody was used at a final concentration of 5µg/mL

Storage/Purification

Polyclonal antibodies are produced by immunizing chickens with recombinant protein corresponding to residues 641-1112 of human SENP6. Antibodies are purified from egg yolks.

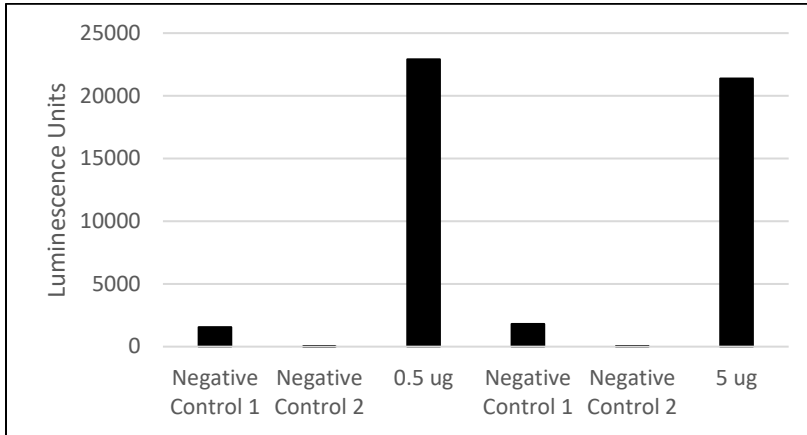
Storage: Supplied in phosphate buffered saline containing 10% glycerol.

Store at -20°C.

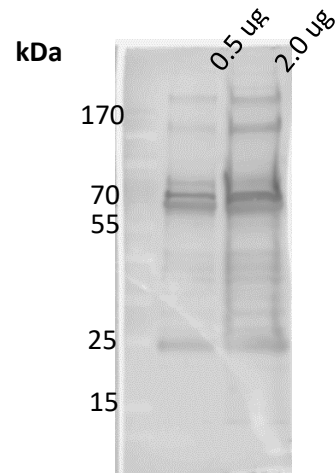
Do not aliquot the antibody.

All products are for research use only • Not intended for human or animal diagnostic or therapeutic uses
Copyright © 2007 LifeSensors, Inc. All Rights Reserved

Detection of SenP6core by AB703 using ELISA and Western Blot



0.5 or 5 ug of SenP6core was coated on ELISA plate. Subsequently, unbound proteins were washed away and blocked with BSA. SenP6core was detected by 1.37 ug/mL of AB703 using traditional ELISA detection reagent. 2^o Antibody: α -Chicken HRP (1:5000). Negative Control 1: No AB703 Negative Control 2: no detection reagent.



Indicated amounts of SenP6core were loaded on SDS-PAGE gel followed by Western Blot. The blot was detected by 6.86 ug/mL of AB703. 2^o Antibody: α -Chicken HRP (1:5000).

References

- 1) Choi, SJ et al. *Negative modulation of RXRalpha transcriptional activity by small ubiquitin-related modifier (SUMO) modification and its reversal by SUMO-specific protease SUSP1.* J Biol Chem. 2006. 281(41):30669-77.
- 2) Mukhopadhyay D. et al. *SUSP1 antagonizes formation of highly SUMO2/3-conjugated species.* J Cell Biol. 2006 Sep 25;174(7):939-49.

All products are for research use only • Not intended for human or animal diagnostic or therapeutic uses
Copyright © 2007 LifeSensors, Inc. All Rights Reserved