

hSUMO3 MetGFP

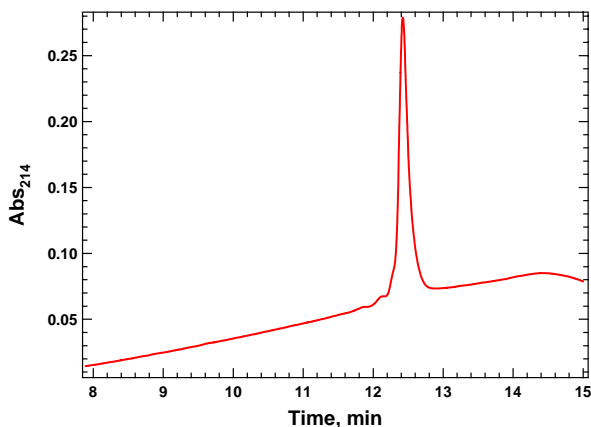
Cat. # 5004

Background: hSUMO3-MetGFP is a recombinant fusion protein that contains the SUMO3 tag, Met (Methionine), followed by a control polypeptide (GFP). This fusion protein is used as a positive control for SUMO Protease 2 activity. Uncleaved hSUMO3-GFP migrates with an apparent MW of ~48 kDa on SDS-PAGE while hSUMO3 runs at 18-20 kDa and GFP runs at ~26 kDa after cleavage.

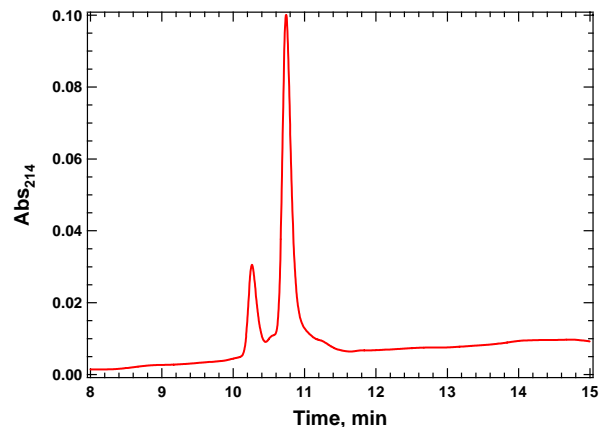
Application: Used for measuring the activity of human desumoylases, especially Senp1, Senp2, and Senp6.

Product Information

Purity:	≥ 95% by RP-HPLC and SDS-PAGE
Molecular Weight:	38.4 kDa
Physical State:	Liquid
Quantity:	100 µg (Concentration dependent on Lot)
Solubility:	> 5 mg/mL
Storage:	-80° C. Avoid repeated freeze/thaw cycles



Intact



1 hr digestion with SUMO Protease 2

References

1. Marblestone JG, Edavettal SC, Lim Y, Lim P, Zuo X, Butt TR (2006) Comparison of SUMO fusion technology with traditional gene fusion systems: Enhanced expression and solubility with SUMO. *Protein Science* **15**,182-9.
2. Butt TR, Edavettal SC, Hall JP, Mattern MR (2005) SUMO fusion technology for difficult-to-express proteins. *Protein Expr Purif.* **43**,1-9.
3. Malakhov MP, Mattern MR, Malakhov OA, Drinker M, Weeks SD, Butt TR (2004) SUMO fusions and SUMO-specific protease for efficient expression and purification of proteins, *J Struct Funct Gen* **5**,75-86.

All products are for research use only • not intended for human or animal diagnostic or therapeutic uses
Copyright © 2009 LifeSensors, Inc. All Rights Reserved