

UBE2R2

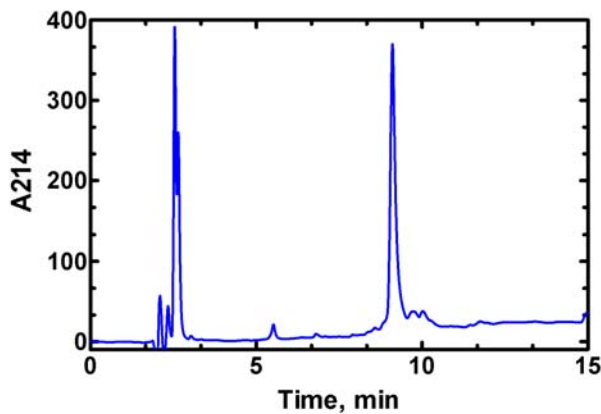
Cat. # UB209

Background: UBE2R2 is a 238 amino acid (27.2 kD) pre-protein from chromosome 9. After CK2-mediated UBE2R2 phosphorylation, it binds to the F-Box protein beta-TrCP, which is the subunit recognition subunit of an SCF E3 ligase. UBE2R2 may be involved in degradation of beta-catenin.

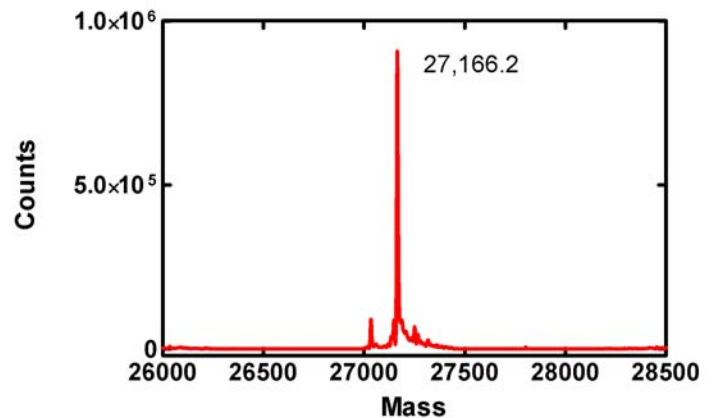
Application: Ubiquitin ligation reactions

Product Information

Organism	Human, Accession No. Q712K3
Source	Recombinant, <i>E. coli</i>
Molecular Weight:	27,166.1 Da
Tag	none
Physical State:	Liquid, TBS
Quantity:	3 nmol (75 μ L @ 40 μ M)
Solubility:	>3 mg/mL
Storage:	-80° C. Avoid repeated freeze/thaw cycles



RP-HPLC



Deconvoluted mass spectrum

All products are for research use only • not intended for human or animal diagnostic or therapeutic uses
 Copyright © 2009 LifeSensors, Inc. All Rights Reserved