

UBE2D3

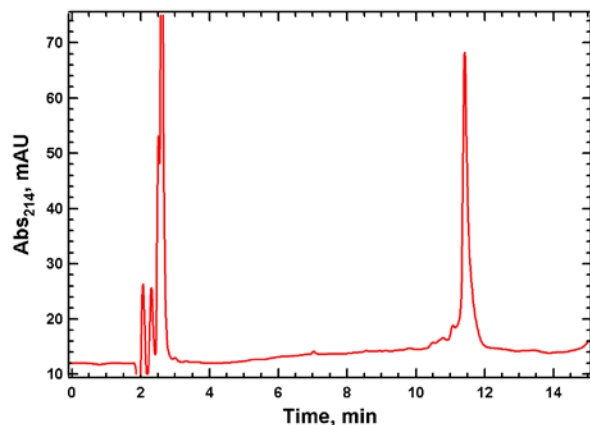
Cat. # UB201

Background: UBE2D3 (UbcH5c) is an E2 (ubiquitin conjugating enzyme) that is involved in the conjugation of ubiquitin to target substrates along with E1 and E3 enzymes. The UbcH5 family (including UbcH5a and UbcH5c, 88% and 89% sequence identity with UbcH5b respectively) are the human homologues of the *Saccharomyces cerevisiae* UBC4/5 family (~79% sequence identity). Members of the UbcH5 family have been implicated in a number of inflammatory and cancer pathways including the ubiquitylation of p53 and I κ B α with the help of different E3 ligases (Hdm2 and SCF complexes respectively).

Application: Ubiquitin ligation reactions

Product Information

Organism	Human, recombinant; Accession No. P61077
Purity:	$\geq 95\%$ by RP-HPLC
Molecular Weight:	16,687.4 Da by MS (expected 16,687.2)
Tag	none
Physical State:	Liquid, 25 mM Tris, pH 7.5; 150 mM NaCl; 10 mM DTT; 10% glycerol
Quantity:	20 μ L or 75 μ L of a 40 μ M solution (0.8 and 3 nmoles, respectively)
Solubility:	>3 mg/mL
Storage:	-80 $^{\circ}$ C. Avoid repeated freeze/thaw cycles



RP-HPLC

All products are for research use only • not intended for human or animal diagnostic or therapeutic uses
Copyright © 2009 LifeSensors, Inc. All Rights Reserved