

## His<sub>6</sub>SUMO-UBE2T

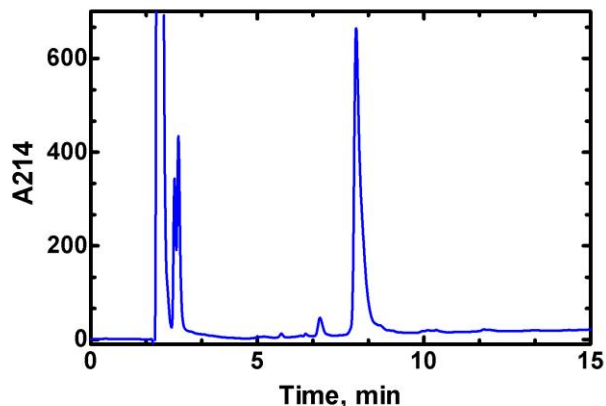
Cat. # UB219T

**Background:** UBE2T can mediate the transfer of ubiquitin from ubiquitin-activating enzyme E1 to a substrate protein or E3 ligase. This E2 enzyme has been shown to be essential for the Fanconi anemia pathway. UBE2T conjugating activity is involved with the monoubiquitylation of FANCD2, co-functioning with the E3 ligase FANCL.

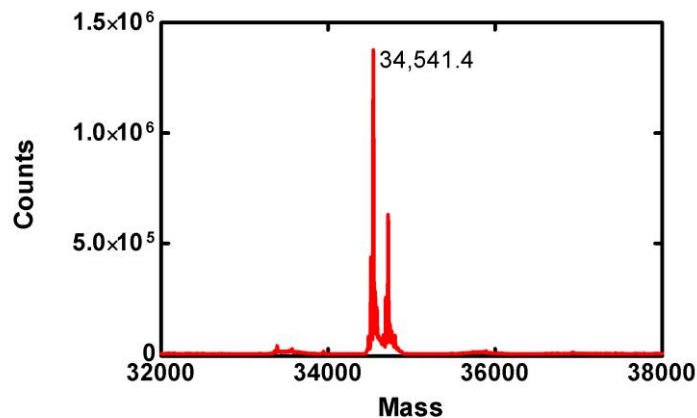
**Application:** Ubiquitin ligation reactions

### Product Information

<b>Organism</b>	Human, Accession No. Q9NPD8
<b>Source</b>	Recombinant, <i>E. coli</i>
<b>Purity:</b>	≥ 80% by RP-HPLC
<b>Molecular Weight:</b>	34,540.3 Da
<b>Tag</b>	His <sub>6</sub> SUMO
<b>Physical State:</b>	Liquid, 25 mM Tris, pH 7.4; 150 mM NaCl; 10 mM Dtt; 10% glycerol
<b>Quantity:</b>	3 nmol (75 μL of a 40 μM solution)
<b>Solubility:</b>	>3 mg/mL
<b>Storage:</b>	-80° C. Avoid repeated freeze/thaw cycles



RP-HPLC



Deconvoluted mass spectrum

All products are for research use only • not intended for human or animal diagnostic or therapeutic uses  
Copyright © 2009 LifeSensors, Inc. All Rights Reserved