

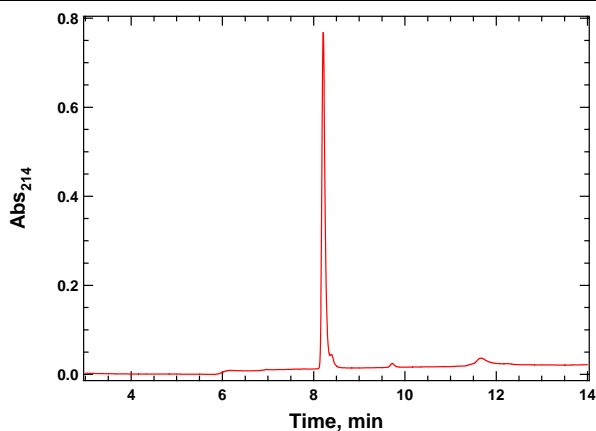
PR-619
Cat. # SI9619

Background: PR-619 is a non-selective, reversible inhibitor of ubiquitin and ubiquitin-like isopeptidases with an IC_{50} in the 5-20 μ M range. Additionally, PR-619 is cell permeable and treatment of cells results in the accumulation of both ubiquitin and sumo-conjugated proteins.

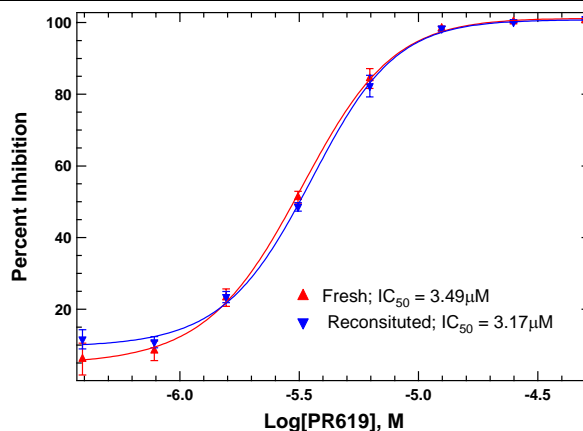
Application: Non-specific inhibition of UBL-isopeptidases for cell biology and drug discovery studies.

Product Information

Molecular formula $C_7H_5N_5S_2$
Purity: $\geq 95\%$ by RP-HPLC
Molecular Weight: 223.28 Da; measured $M+H^+ = 224.11$
Physical State: Dry powder
Quantity: 5 mg
Solubility: ≥ 5 mg/mL in DMSO
Storage: Ships at 4°C and stable at 4°C for up to 1-year, long term storage at -20°C.



RP-HPLC



Typical DUB Inhibition curves

All products are for research use only • not intended for human or animal diagnostic or therapeutic uses
 Copyright © 2009 LifeSensors, Inc. All Rights Reserved