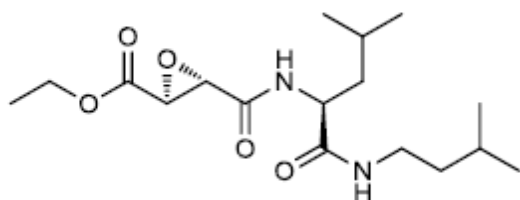


E64D

Cat. # AC-1004

Background: Cell-permeable derivative of E64-C, an inhibitor of calpain and other cysteine proteases, such as papain, cathepsin B and cathepsin L^{1,2}. Addition to cell cultures should be done in serum-free media as esterases in serum will cleave the ethyl ester and reduce cell permeability. Typical working concentration is 0.5-10 µg/ml. Inhibits degradation of autophagic cargo inside autolysosomes³.

Application: Inhibits proteolysis of autophagic cargo



Product Information

Purity:	>98.0% by HPLC
MW:	342.4
Formula:	C ₁₇ H ₃₀ N ₂ O ₅
CAS No.	88321-09-9
Physical State:	Lyophilized white to off-white powder
Amount:	1mg, 5mg
Solubility:	20 mg/mL in DMSO, 10mg/mL in ethanol
Storage:	Store, as supplied, at -20°C for up to 2 years. Store solutions at -20°C for up to 1 month.

References

1. EB MCGowan *et al. Biochem. Biophys. Res. Commun.* 1989 158:432
2. D Wilcox and RW Mason *Biochem. J.* 1992 285:495
3. N Mizushima *et al. Cell* 2010 140:313

All products are for research use only • not intended for human or animal diagnostic or therapeutic uses
Copyright © 2013 LifeSensors, Inc. All Rights Reserved