

UBE2W, HIS₆

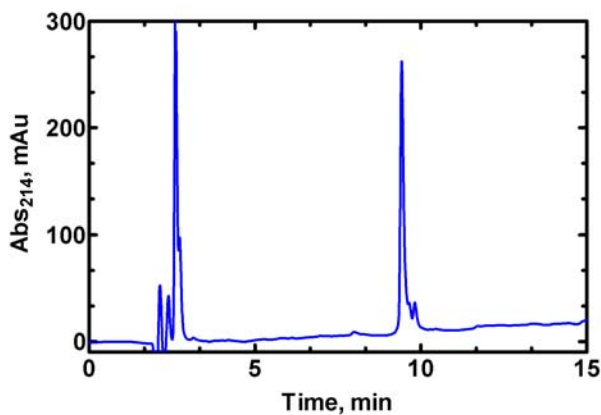
Cat. # UB223H

Background: UBE2W is an ubiquitin conjugating enzyme and mediates the transfer of ubiquitin from a ubiquitin-activating enzyme (E1) to a substrate protein or E3 ligase. UBE2W was originally identified as the human homolog of the *Arabidopsis* E2 enzyme Ubc-16. Researchers demonstrated that UBE2W contains a NLS sequence and is localized to the nucleus of HEK293 cells¹. UBE2W binds to the E3 ligase BRCA1 and mediates the mono-ubiquitylation of BRCA1².

Application: Ubiquitin ligation reactions

Product Information

Organism	Human, recombinant; Accession No. Q96B02
Source	Recombinant, <i>E. coli</i>
Purity:	≥ 80% by RP-HPLC
Molecular Weight:	18,324.9 Da
Tag	His6
Physical State:	Liquid, TBS, 10% glycerol
Quantity:	3 nmol (75 µL @ 40 µM)
Solubility:	>3 mg/mL
Storage:	-80° C. Avoid repeated freeze/thaw cycles



RP-HPLC

References

1. [Yin G, Ji C, Wu T, Shen Z, Xu X, Xie Y, Mao Y.](#) Cloning, characterization and subcellular localization of a gene encoding a human Ubiquitin-conjugating enzyme (E2) homologous to the *Arabidopsis thaliana* UBC-16 gene product. *Front Biosci.* **11**,1500-7 (2006).
2. [Christensen DE, Brzovic PS, Klevit RE.](#) E2-BRCA1 RING interactions dictate synthesis of mono- or specific polyubiquitin chain linkages. *Nat Struct Mol Biol.* **14**,941-8 (2007).

All products are for research use only • not intended for human or animal diagnostic or therapeutic uses
Copyright © 2009 LifeSensors, Inc. All Rights Reserved