

His₆SUMO-UBE2H

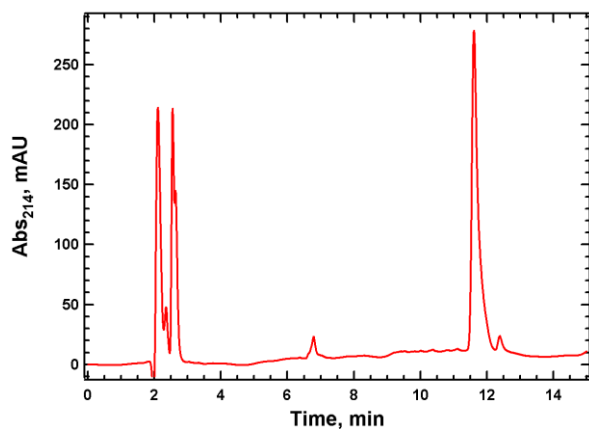
Cat. # UB215T

Background: UBE2H can mediate the transfer of ubiquitin from ubiquitin-activating enzyme E1 to a substrate protein or E3 ligase. UBE2H is an ubiquitin conjugating enzyme known to act on histones and cytoskeletal proteins, both involved in the degenerative pathway of the motor neuron. It has also been shown to ubiquitylate Histone H2A *in vitro*.

Application: Ubiquitin ligation reactions

Product Information

| | |
|--------------------------|---|
| Organism | Human, recombinant; Accession No. P62256 |
| Purity: | ≥ 90% by RP-HPLC |
| Molecular Weight: | 32,675 Da by MS (calculated 32,674.6) |
| Tag | His ₆ -SUMO |
| Physical State: | Liquid, 50 mM Tris, pH 7.5; 150 mM NaCl; 10 mM DTT; 10% glycerol |
| Quantity: | 20 μL or 75 μL of a 40 μM solution (0.8 and 3 nmoles, respectively) |
| Solubility: | >3 mg/mL |
| Storage: | -80° C. Avoid repeated freeze/thaw cycles |



All products are for research use only • not intended for human or animal diagnostic or therapeutic uses
Copyright © 2009 LifeSensors, Inc. All Rights Reserved