

**His<sub>6</sub>-UBE2I**

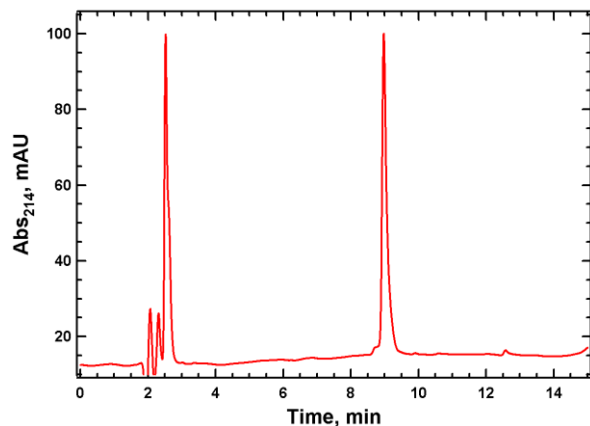
Cat. # UB228H

**Background:** This E2 is a SUMO-conjugating enzyme, also known as Ubc9. UBE2I can mediate the transfer of SUMO1, SUMO2, SUMO3 and SUMO4 from SUMO-activating enzyme E1 (UBLE1A-UBLE1B complex) to a substrate protein. This E2 enzyme has been shown to associate with the SUMO E3 ligases, RANBP2 or CBX4. This E2 conjugating enzyme is necessary for sumoylation and it is essential for nuclear architecture and chromosome segregation.

**Application:** Ubiquitin ligation reactions

**Product Information**

|                          |   |
|--------------------------|---|
| <b>Organism</b>          | Human, recombinant; Accession No. P63279                            |
| <b>Purity:</b>           | ≥ 95% by RP-HPLC  |
| <b>Molecular Weight:</b> | 19,001 Da by MS (calculated 19,000.9)                               |
| <b>Tag</b>               | His <sub>6</sub>  |
| <b>Physical State:</b>   | Liquid, 50 mM Tris, pH 7.5; 150 mM NaCl; 10 mM DTT; 10% glycerol    |
| <b>Quantity:</b>         | 20 µL or 75 µL of a 40 µM solution (0.8 and 3 nmoles, respectively) |
| <b>Solubility:</b>       | >3 mg/mL  |
| <b>Storage:</b>          | -80° C. Avoid repeated freeze/thaw cycles                           |

**RP-HPLC**

All products are for research use only • not intended for human or animal diagnostic or therapeutic uses  
Copyright © 2009 LifeSensors, Inc. All Rights Reserved