

Chicken anti-SUMO/SUMOstar, affinity purified

Cat. # AB7002

Background: Our Anti-SUMO antibody is affinity- purified, polyclonal chicken IgY. It can be used to localize yeast SUMO- and SUMOstar-tagged polypeptides by Western blot and ELISA. The antibody has not been tested for immunohistochemistry and immunoprecipitation applications.

Application: Western blot, recommended dilution 1:1000 to 1:5000

Product Information

Species: Chicken

Isotype: IgY

Purification: Affinity purified

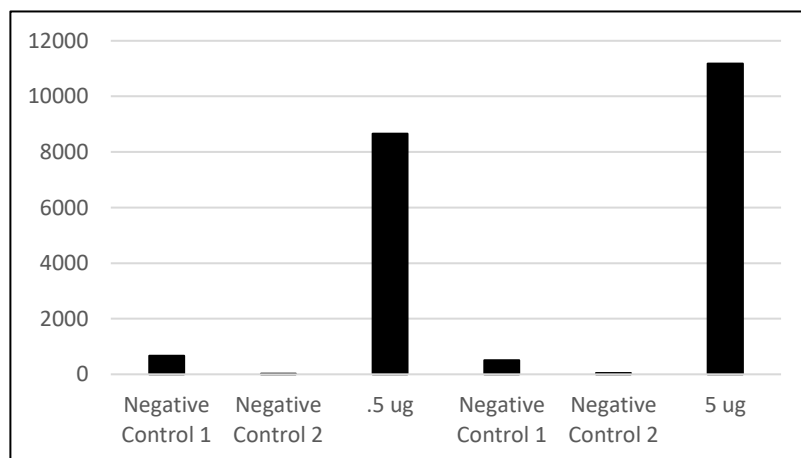
Physical State: liquid

Applications: WB (1:1000 to 1:5000)

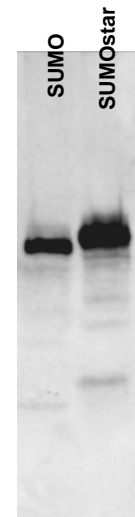
Quantity: 50 µg

Storage: For extended storage aliquot contents and freeze at -20°C or below. Avoid repeated freeze/thaw cycles

Detection of Smt3 by AB7002 using ELISA and Western Blot



0.5 or 5 µg of Smt3 was coated on ELISA plate. Subsequently, unbound proteins were washed away and blocked with BSA. Smt3 was detected by 1.34 µg/mL of AB7002 using traditional ELISA detection reagent. 2^o Antibody: α-Chicken HRP (1:5000). Control 1: No AB7002 Negative Control 2: no detection reagent.



1:100 dilution of crude *E. coli* lysate expressing either SUMO-GFP or SUMOstar-GFP

All products are for research use only • not intended for human or animal diagnostic or therapeutic uses
Copyright © 2009 LifeSensors, Inc. All Rights Reserved