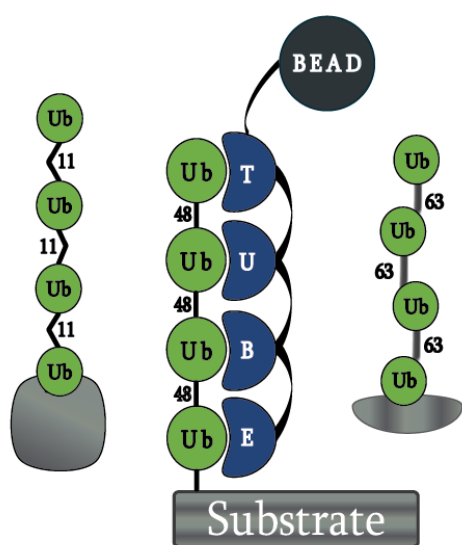


We would love to collaborate with you using this product. If you are interested, please [contact us](#).



LifeSensors' linkage selective **Tandem Ubiquitin Binding Entities (TUBE)** identify specific polyubiquitin chains.

Highly selective **K48 TUBE HF** available now!!!

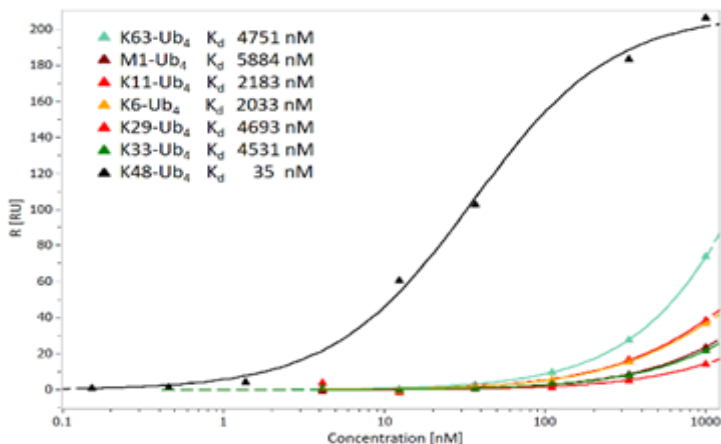


Purify poly-Ub modified proteins from cell lines and tissues

Product	Application
Magnetic K48 TUBE HF (UM 407M)	One step pull-down and isolation
GST- and His₆- tagged K48 TUBE HF (UM 107 and UM 207)	Purification using affinity resins or secondary immunoprecipitation
Biotin K48 TUBE HF (UM 307)	Far Western detection or affinity purification
FLAG K48 TUBE HF (UM 606)	Secondary immunoprecipitation and Far Western detection
Fluorescent K48 TUBE HF (FITC UM507F and TAMRA UM 507T)	Histochemical detection

Selectivity

K48 TUBE HF binds K48 tetraubiquitin selectively

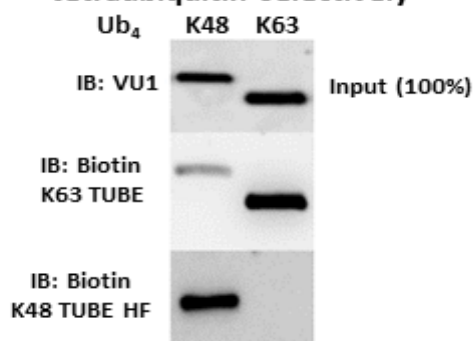


New! Highly selective K48 TUBE HF for the Isolation of K48-linked Polyubiquitin

- Ideal for isolating, purifying and detecting K48-linked polyubiquitinated proteins
- Nanomolar affinity for K48-linked polyubiquitin chains
- Eliminates need for ubiquitin overexpression or tagged ubiquitin
- Isolate proteins for proteomics, Far Western or other biochemical analysis
- Linked to a variety of tags to meet your experimental needs

Detection

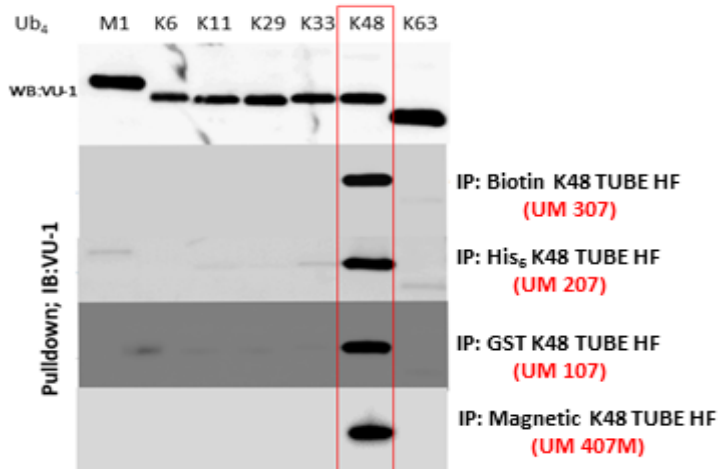
K48 TUBE HF can be used to detect K48 tetraubiquitin selectively



K48 TUBE HF consists of multiple ubiquitin interacting motifs separated by rigid linkers that increase affinity to K48-linked polyubiquitin chains. K48 TUBE HF is highly selective for K48-linked polyubiquitin compared to other polyubiquitin chains.

Pull-down

Pull-down with different variants of K48 TUBE HF



Proteomics

Proteomics Analysis of Pull-down from SH-SY5Y Cells Using K48 TUBE HF

