

SEN2 Antibody (SUMO Protease 2)

Cat. # AB4020

250µg

Background

SEN2 is a deSUMOylating enzyme that can recognize the three primary isoforms of SUMO (SUMO-1, -2, -3). A large amount of work has been done on the structural interactions of SEN2 with substrates^{1,2}. SEN2 regulates a large number of cellular processes including nuclear transport and cell cycle^{3,4}.

Alternate Names: Axam2, AXAM2, DKFZp762A2316, KIAA1331, Sentrin/SUMO-specific protease SEN2, Sentrin-specific protease 2, Smt3ip2, SMT3IP2, SMT3-specific isopeptidase 2

Molecular Weight: 31kDa

Specificity/Applications

Species Cross Reactivity: Human

Source: Chicken

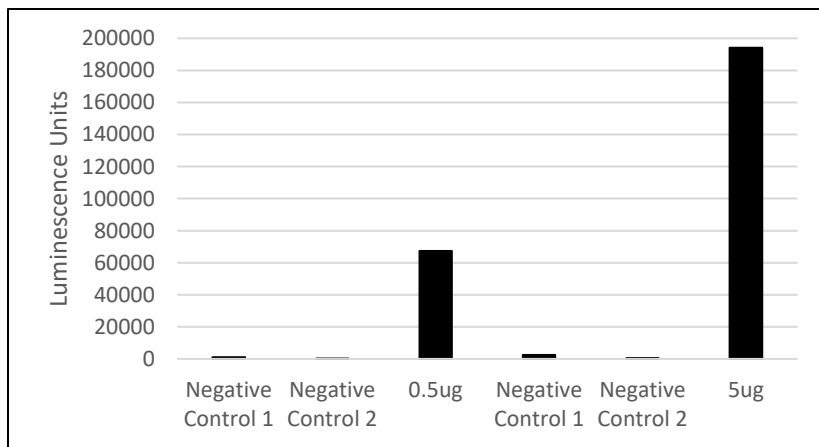
Applications: WB

Recommended Antibody Dilutions:

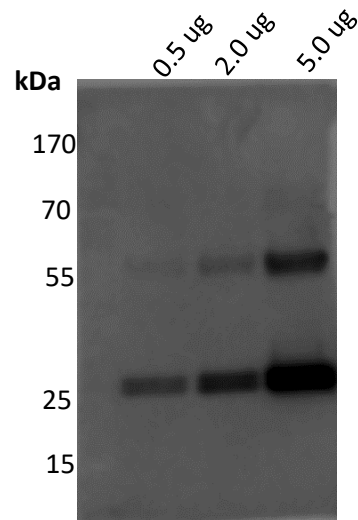
Western Blotting: Robust detection of 500ng of recombinant protein was possible when antibody was used at a final concentration of 10µg/mL

Storage: Store at -20°C; Avoid repeated freeze/thaw cycles. Supplied in phosphate buffered saline (pH 7.4).

Detection of SenP2core by AB4020 using ELISA and Western Blot



0.5 or 5 ug of SenP2core was coated on ELISA plate. Subsequently, unbound proteins were washed away and blocked with BSA. SenP2core was detected by 20.14 ug/mL of AB4020 using traditional ELISA detection reagent. 2^o Antibody: α-Chicken HRP (1:5000).
 Negative Control 1: No AB4020 Negative Control 2: no detection reagent.
 2^o Antibody: α-Chicken HRP (1:5000).



Indicated amounts of SenP2core were loaded on SDS-PAGE gel followed by Western Blot. The blot was detected by 10.00 ug/mL of AB4020.

All products are for research use only • Not intended for human or animal diagnostic or therapeutic uses
 Copyright © 2007 LifeSensors, Inc. All Rights Reserved

References

- 1) Chiu SY, Asai N, Costantini F, Hsu W. *SUMO-specific protease 2 is essential for modulating p53-Mdm2 in development of trophoblast stem cell niches and lineages*. PLoS Biol. 2008 ;6(12):e310.
- 2) Reverter D, Lima CD. *Structural basis for SENP2 protease interactions with SUMO precursors and conjugated substrates*. Nat Struct Mol Biol. 2006 Dec;13(12):1060-8. Epub 2006 Nov 12.
- 3) Reverter D, Lima CD. *A basis for SUMO protease specificity provided by analysis of human Senp2 and a Senp2-SUMO complex*. Structure. 2004;12(8):1519-31.
- 4) Hang J, Dasso M. *Association of the human SUMO-1 protease SENP2 with the nuclear pore*. J Biol Chem. 2002 ;277(22):19961-6. Epub 2002 Mar 14.

All products are for research use only • Not intended for human or animal diagnostic or therapeutic uses
Copyright © 2007 LifeSensors, Inc. All Rights Reserved