

IQF-DiUb

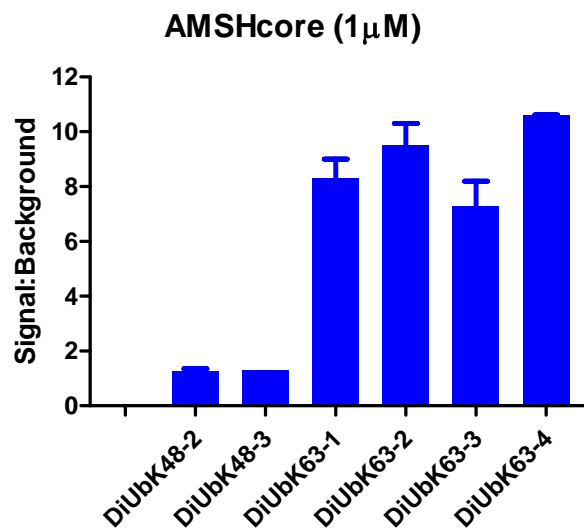
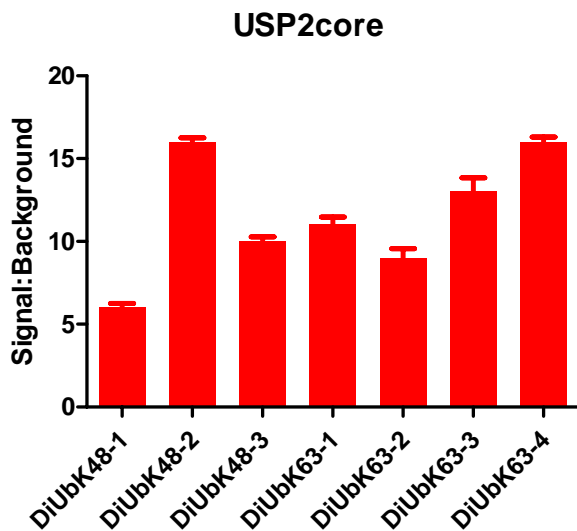
Cat. # DU48xx/DU63xx

Background: The diubiquitin substrates represent a new class of continuous assay substrates for the cleavage of a true isopeptide bond. They are based on the formation of an internally quenched fluorescent FRET pair (IQF) in which the fluorescence quencher is located on one ubiquitin moiety and the fluorescent dye is located on the second. The ubiquitins are joined by an isopeptide linkage between the C-terminal glycine of one ubiquitin and the ϵ -amino group of a lysine residue in the second ubiquitin. For the DiUb48 class, this is lysine 48, for DiUb63 class, it is lysine 63.

Application: Real time measurement of isopeptide bond cleavage by a DUB.

Product Information

Purity:	$\geq 90\%$
Molecular Weight:	18,400 – 18,600 Da
Physical State:	liquid
Quantity:	50 μ g
Solubility:	
Storage:	+4° C



All products are for research use only • not intended for human or animal diagnostic or therapeutic uses
 Copyright © 2009 LifeSensors, Inc. All Rights Reserved